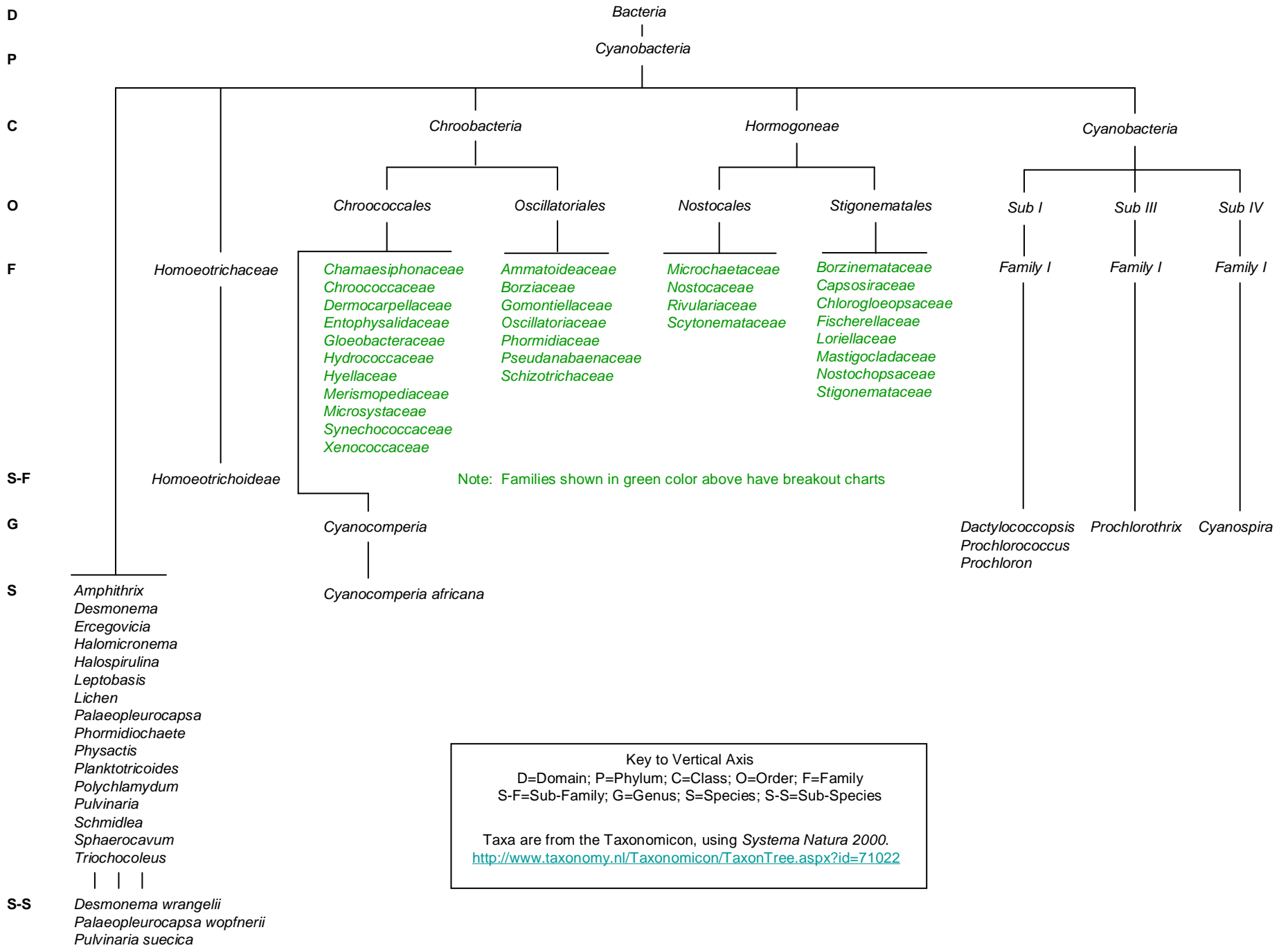


DOMAIN

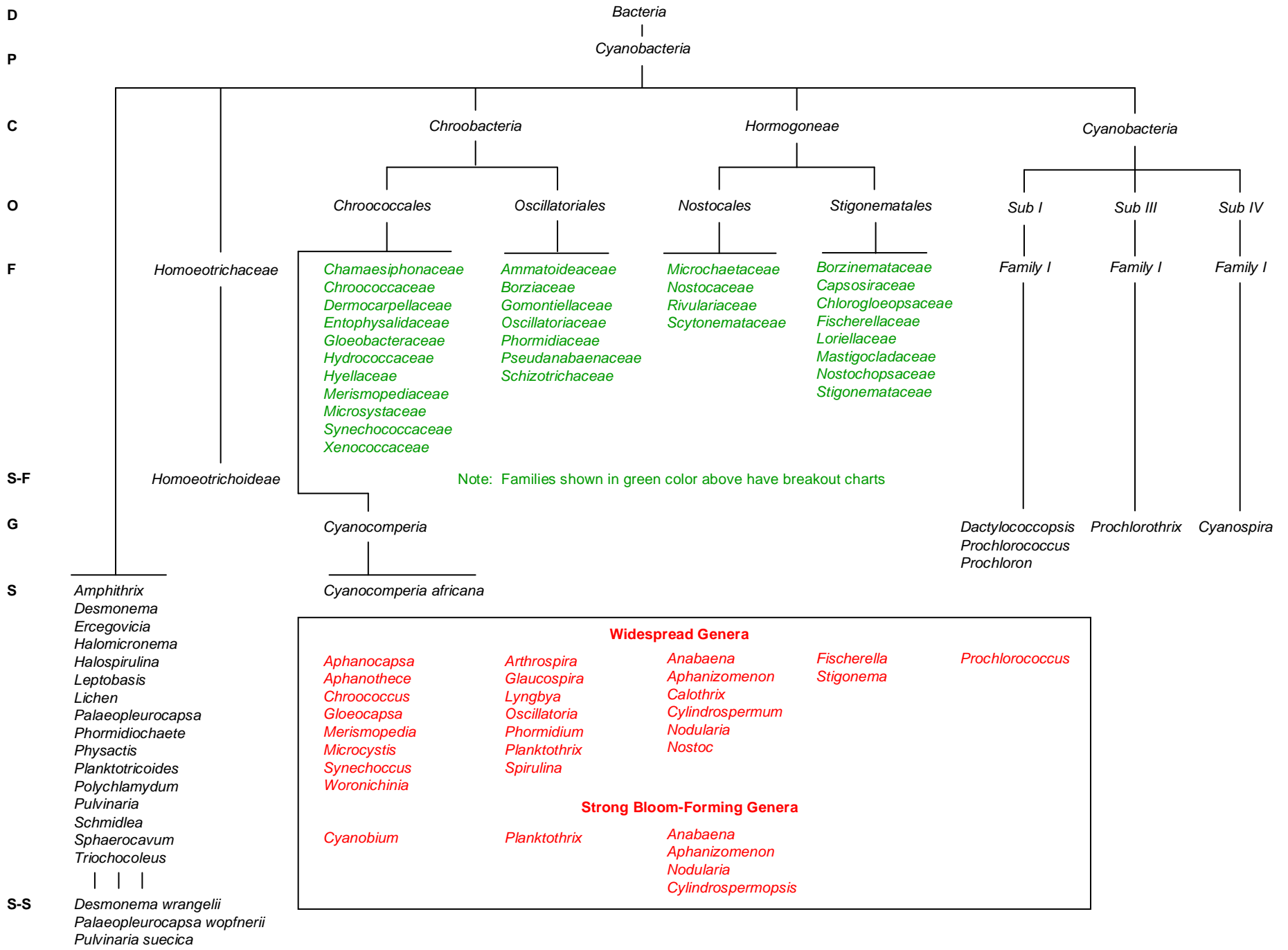
Bacteria

PHYLUM

Cyanobacteria



Key Genera



CLASS
Chroobacteria

ORDER
Chroococcales

O

Chroococcales

F

Chamaesiphonaceae

G

Chamaecalyx

Chamaesiphon

Clastidium

Cyanophanon

Geitleribactron

Stichosiphon

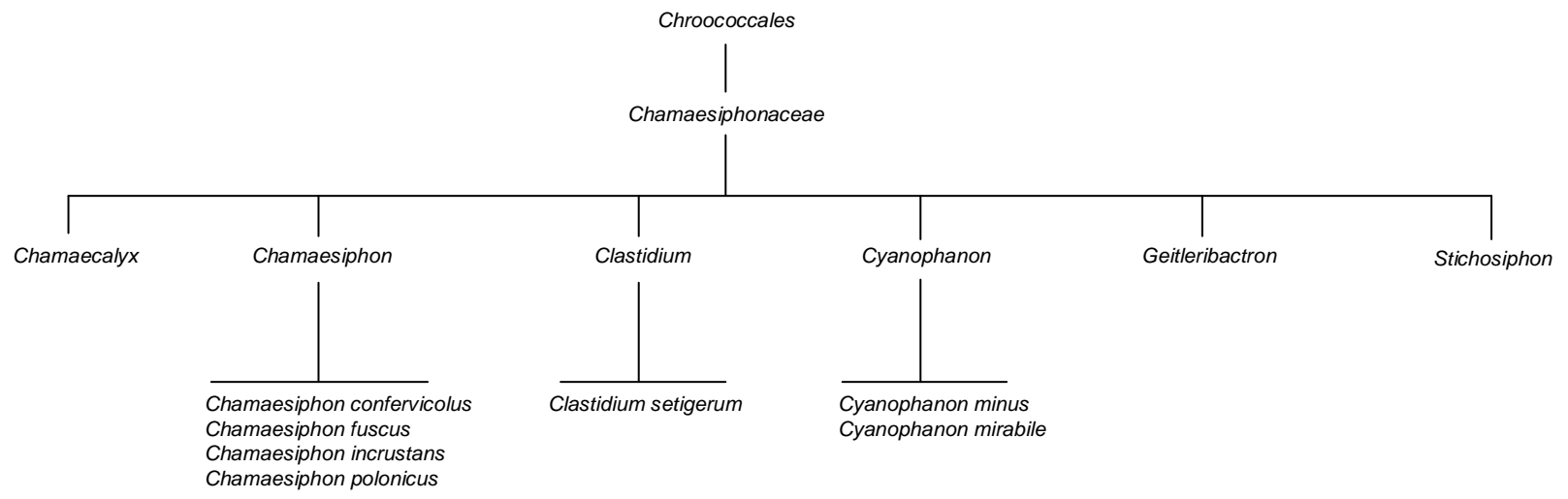
S

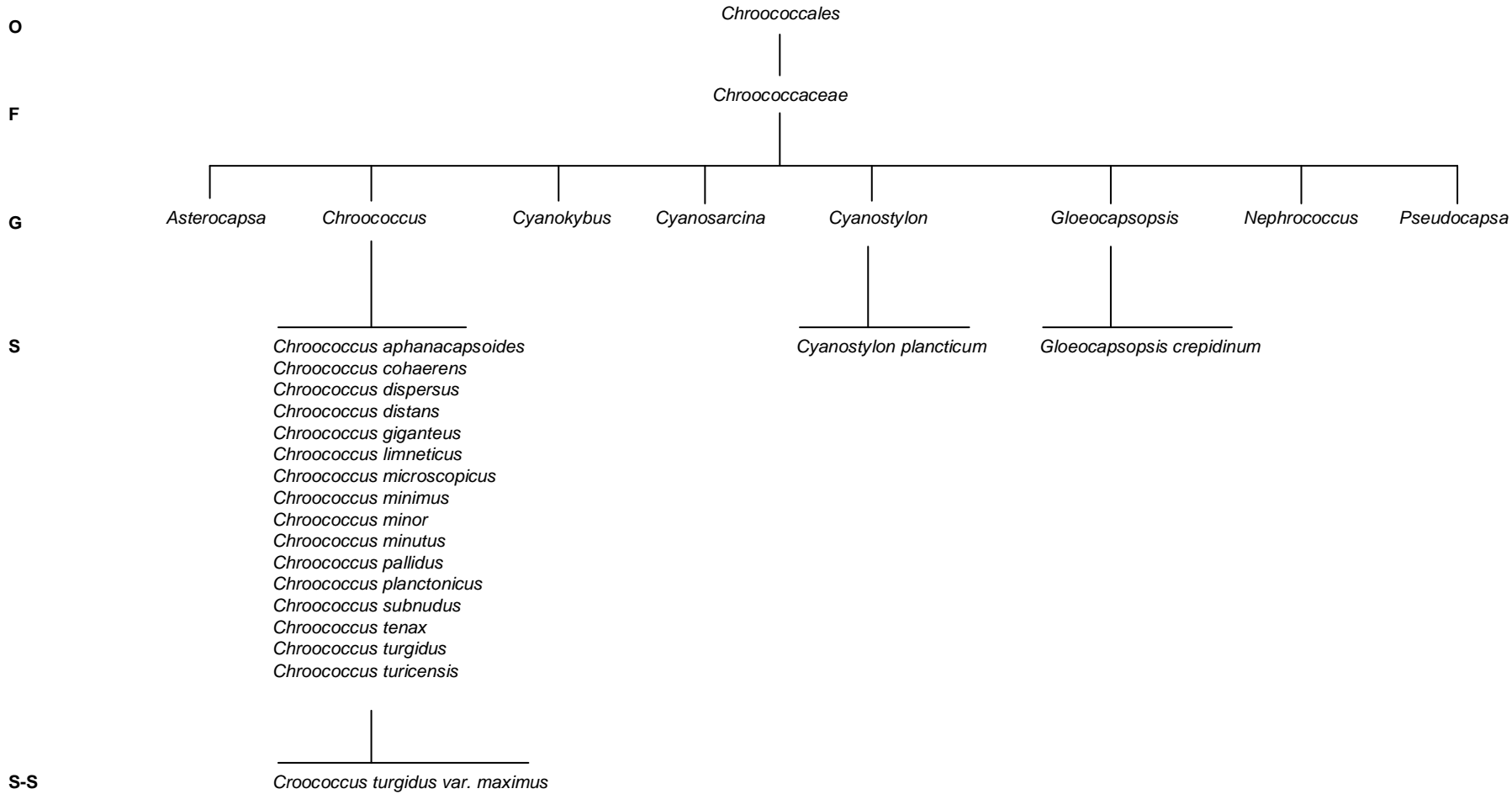
Chamaesiphon confervicolus
Chamaesiphon fuscus
Chamaesiphon incrustans
Chamaesiphon polonicus

Clastidium setigerum

Cyanophanon minus
Cyanophanon mirabile

S-S





O

Chroococcales

F

Dermocarpellaceae

G

Cyanocystis

Dermocarpella

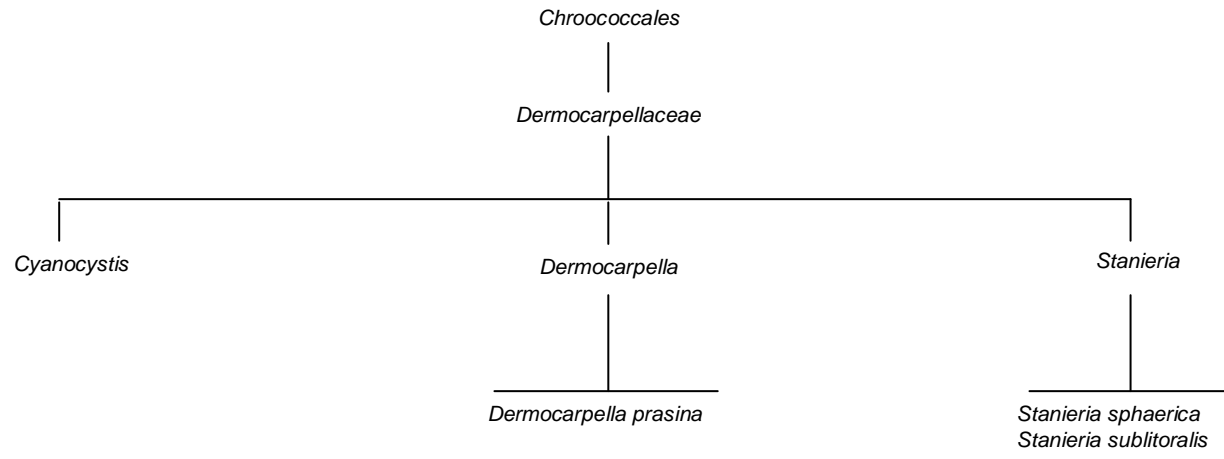
Stanieria

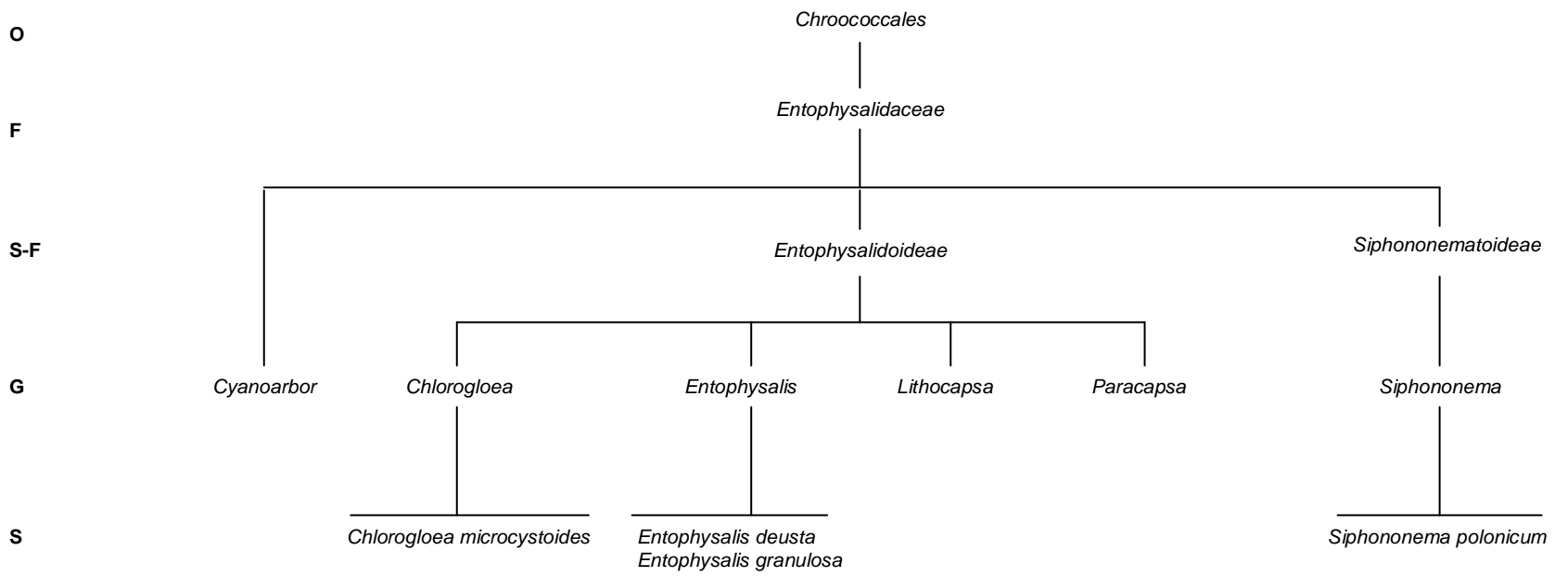
S

Dermocarpella prasina

Stanieria sphaerica
Stanieria sublitoralis

S-S





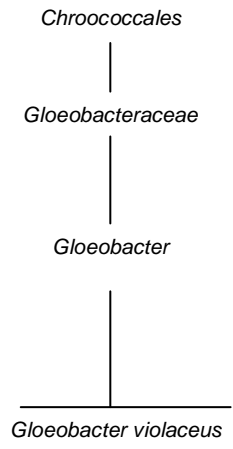
O

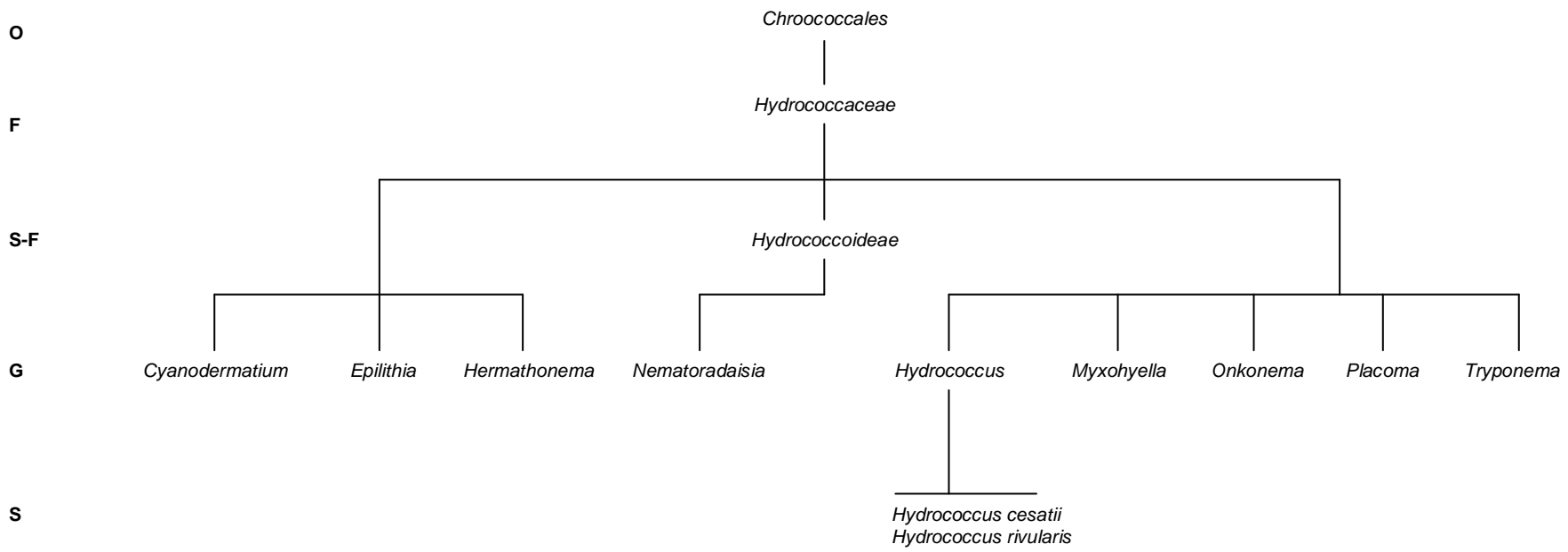
F

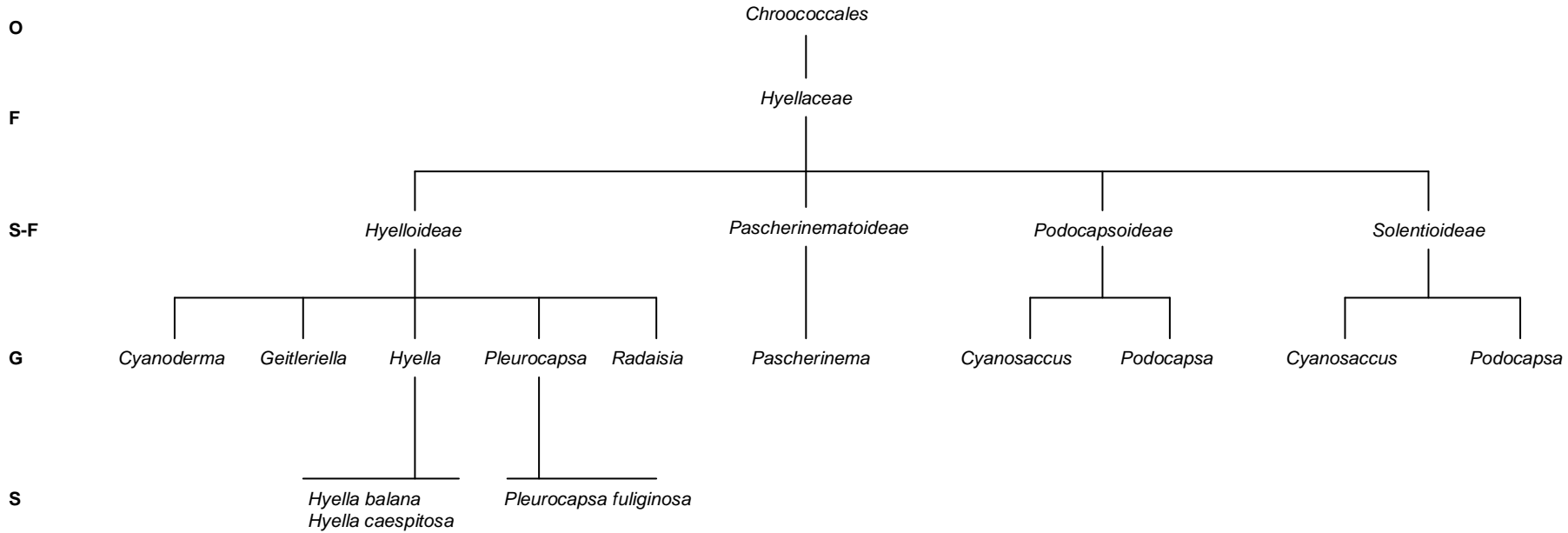
G

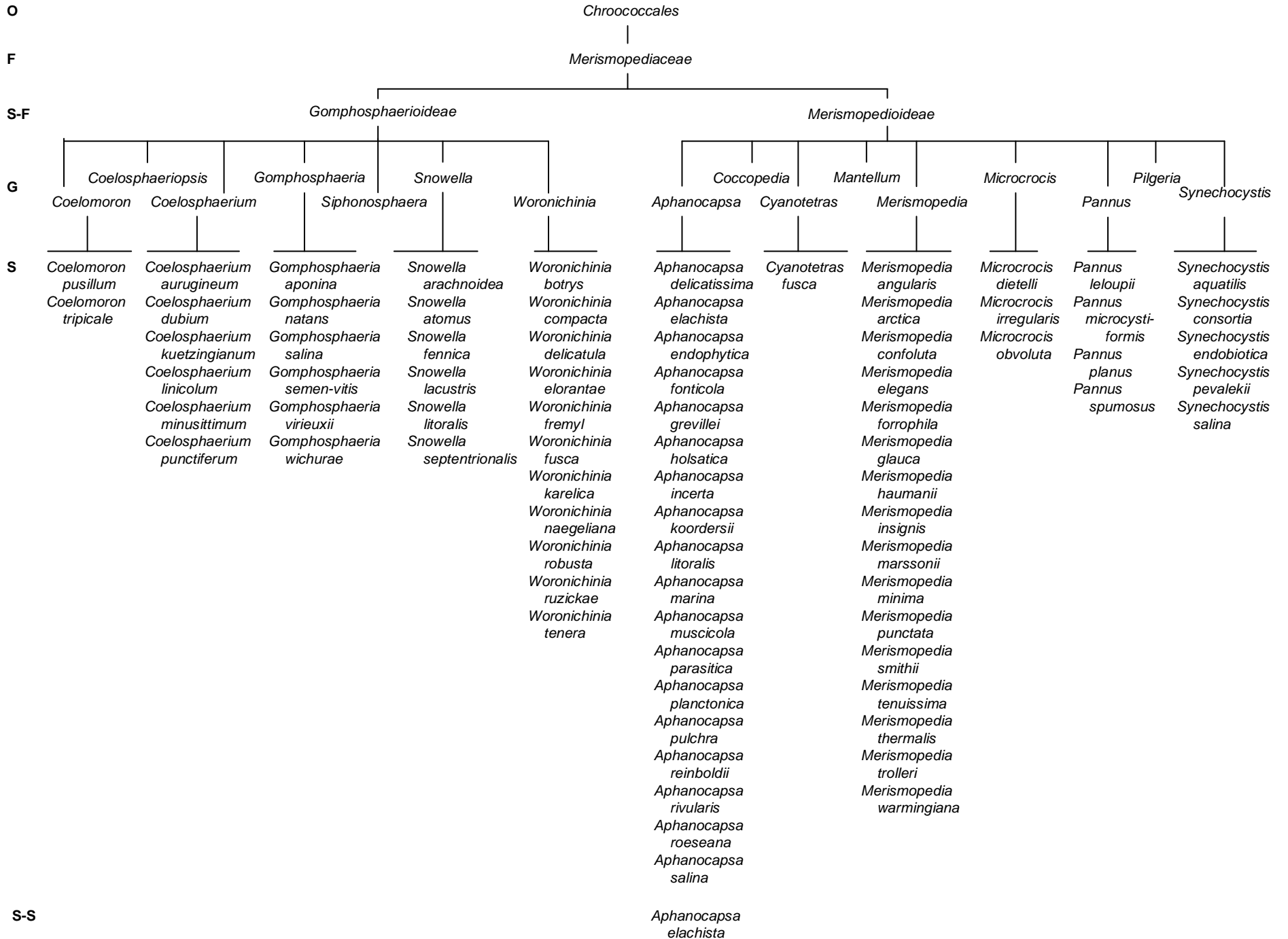
S

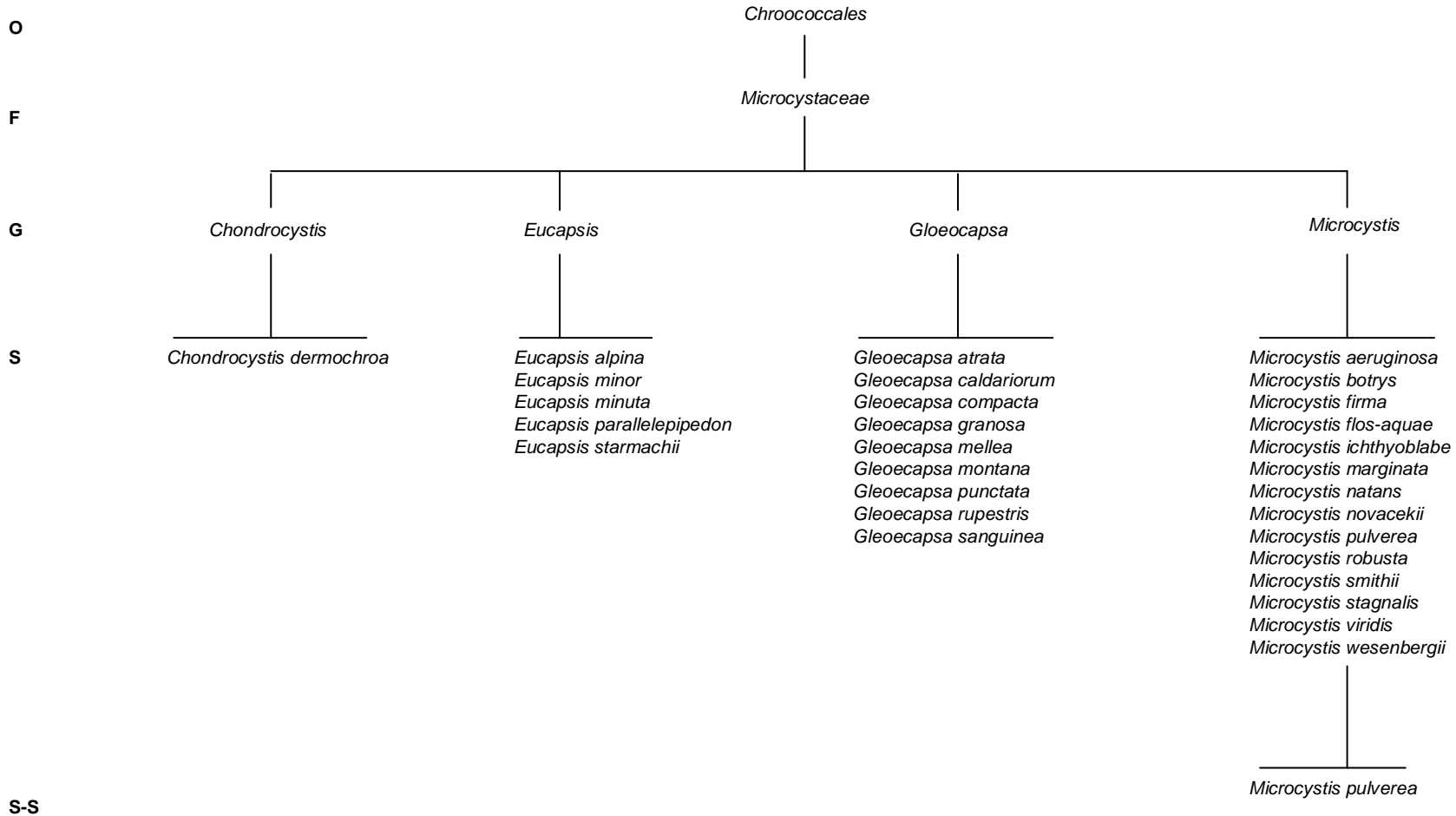
S-S











O

Chroococcales

F

Xenococcaceae

G

Chroococciopsis

Chroococcidium

Chroococcopsis

Myxosarcina

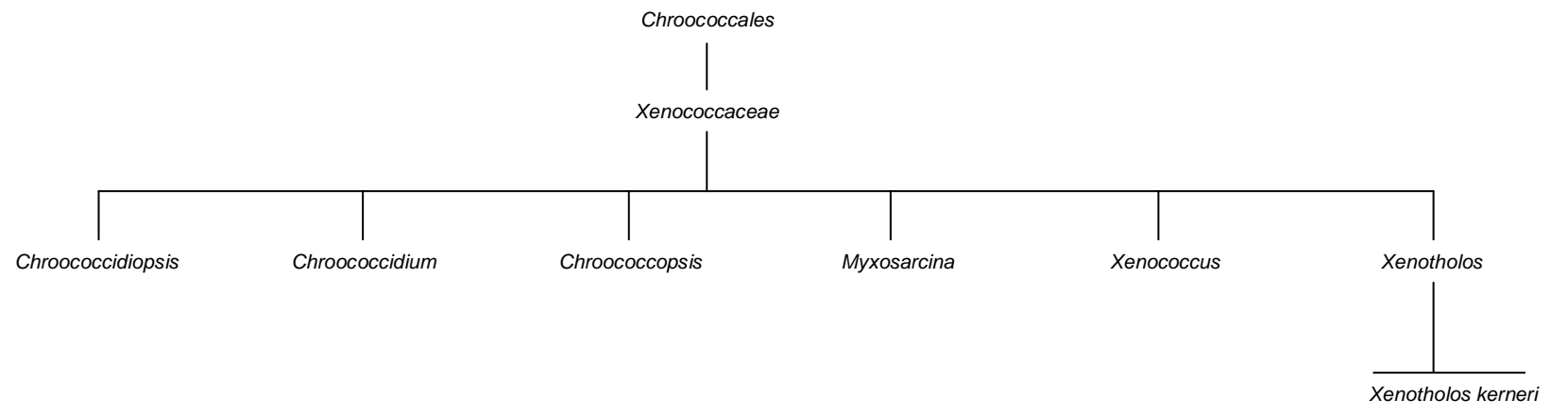
Xenococcus

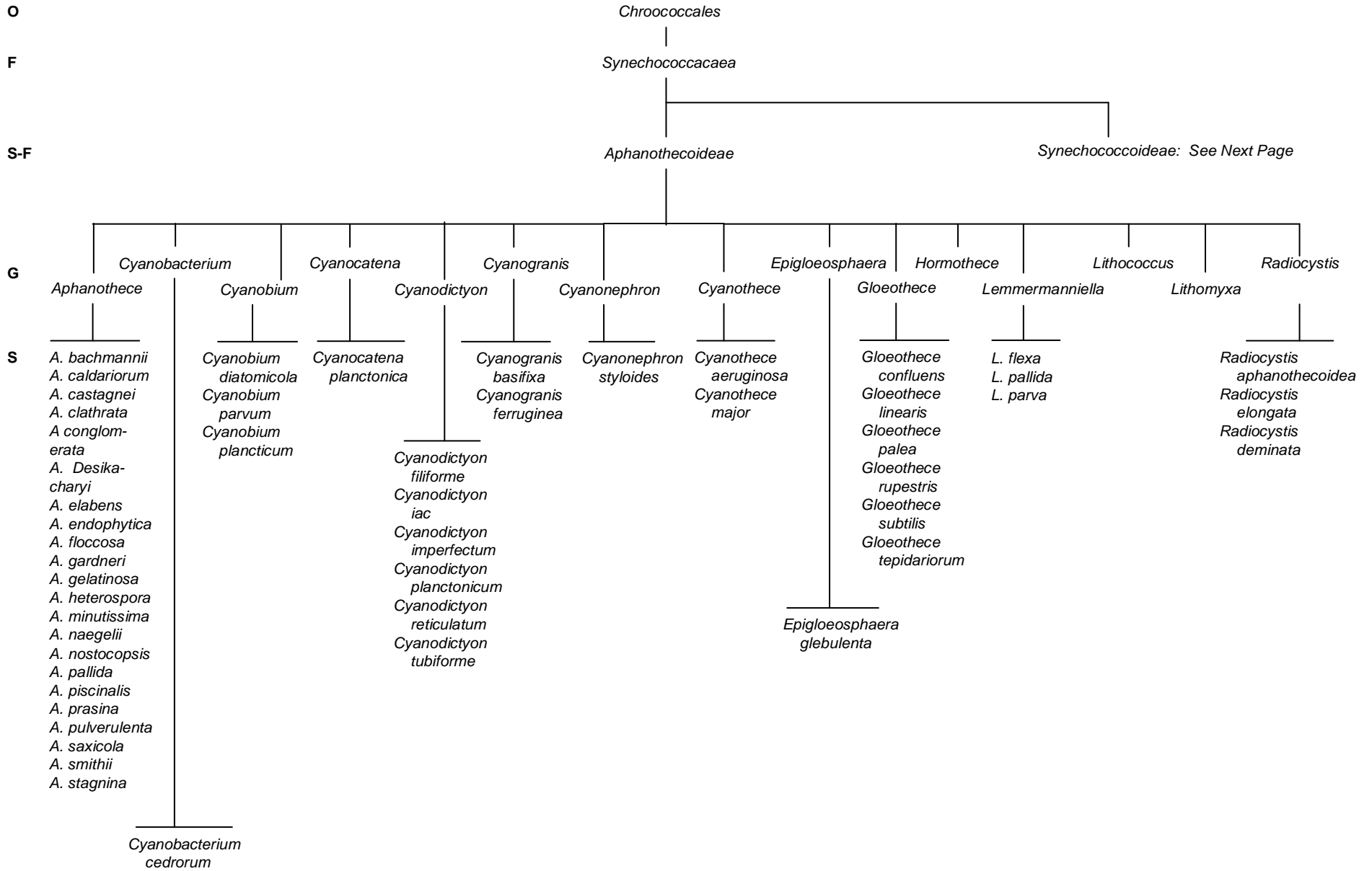
Xenotholos

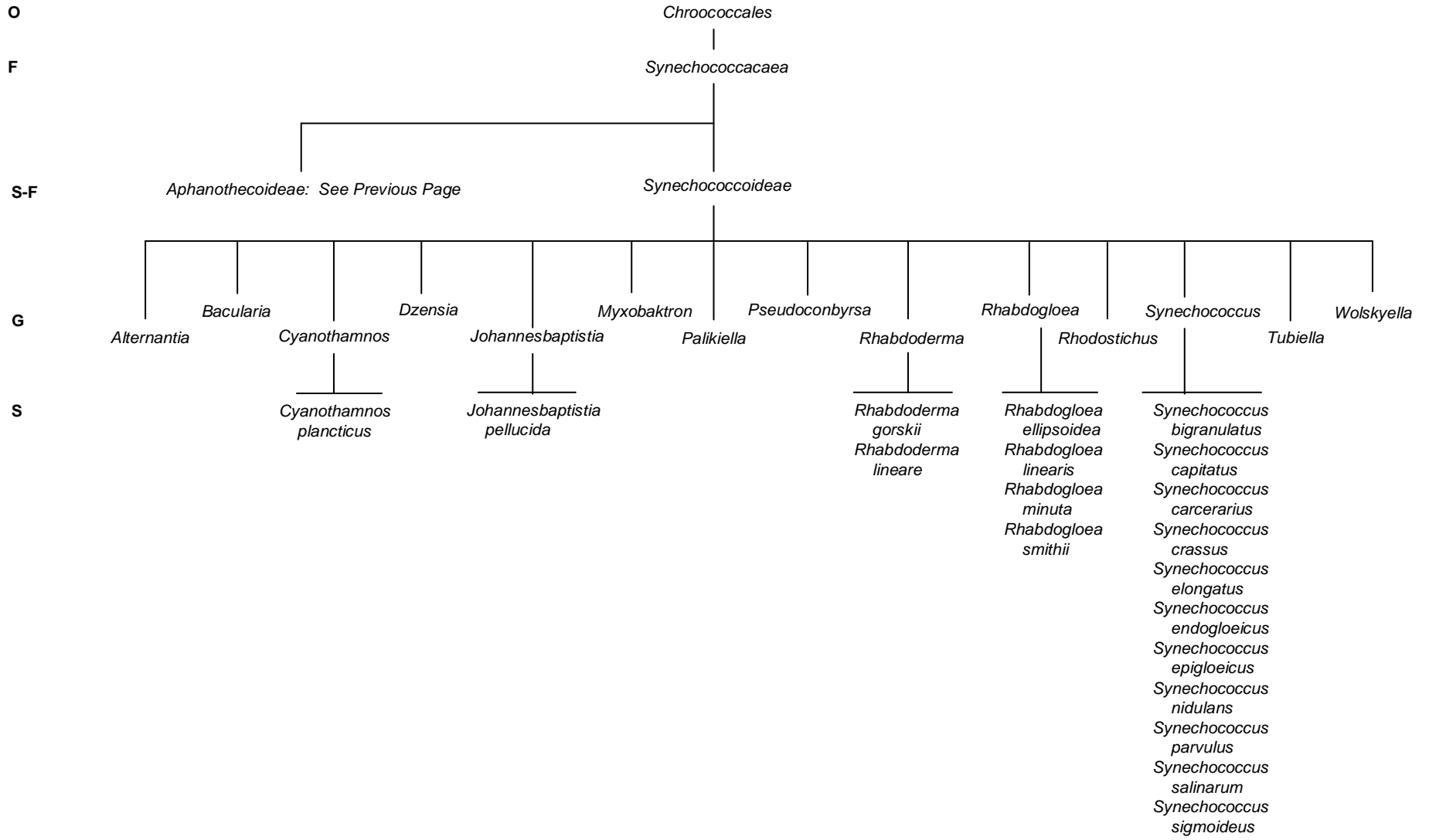
S

Xenotholos kernerii

S-S







CLASS
Chroobacteria

ORDER
Oscillatoriales

O

Oscillatoriales

F

Ammatoideaeceae

G

Ammatoideae

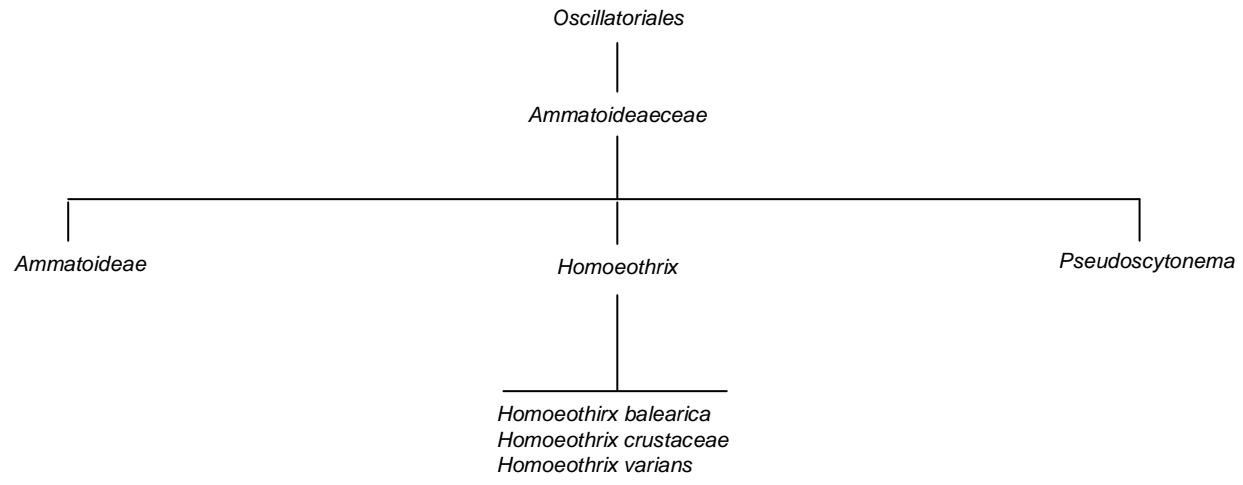
Homoeothrix

Pseudoscytonema

S

Homoeothrix balearica
Homoeothrix crustaceae
Homoeothrix varians

S-S



O

Oscillatoriales

F

Borziaceae

G

Borzia

Komvophoron

Proterendothrix

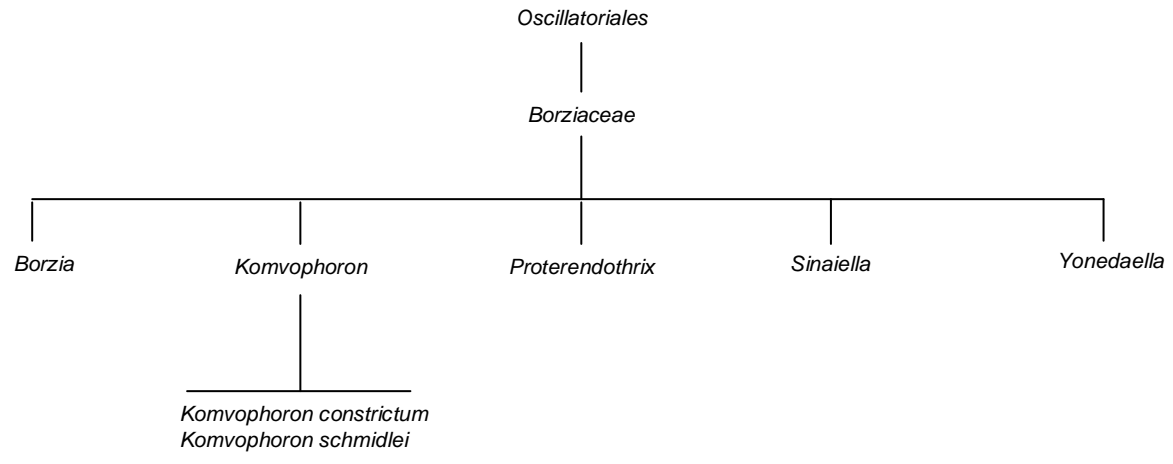
Sinaiella

Yonedaella

S

Komvophoron constrictum
Komvophoron schmidlei

S-S



O

Oscillatoriales

F

Gomontiellaceae

S-F

Gomontielloideae

Hormoscilloideae

G

Crinalium

Cyanarcus

Gomontiella

Starria

Hormoscilla

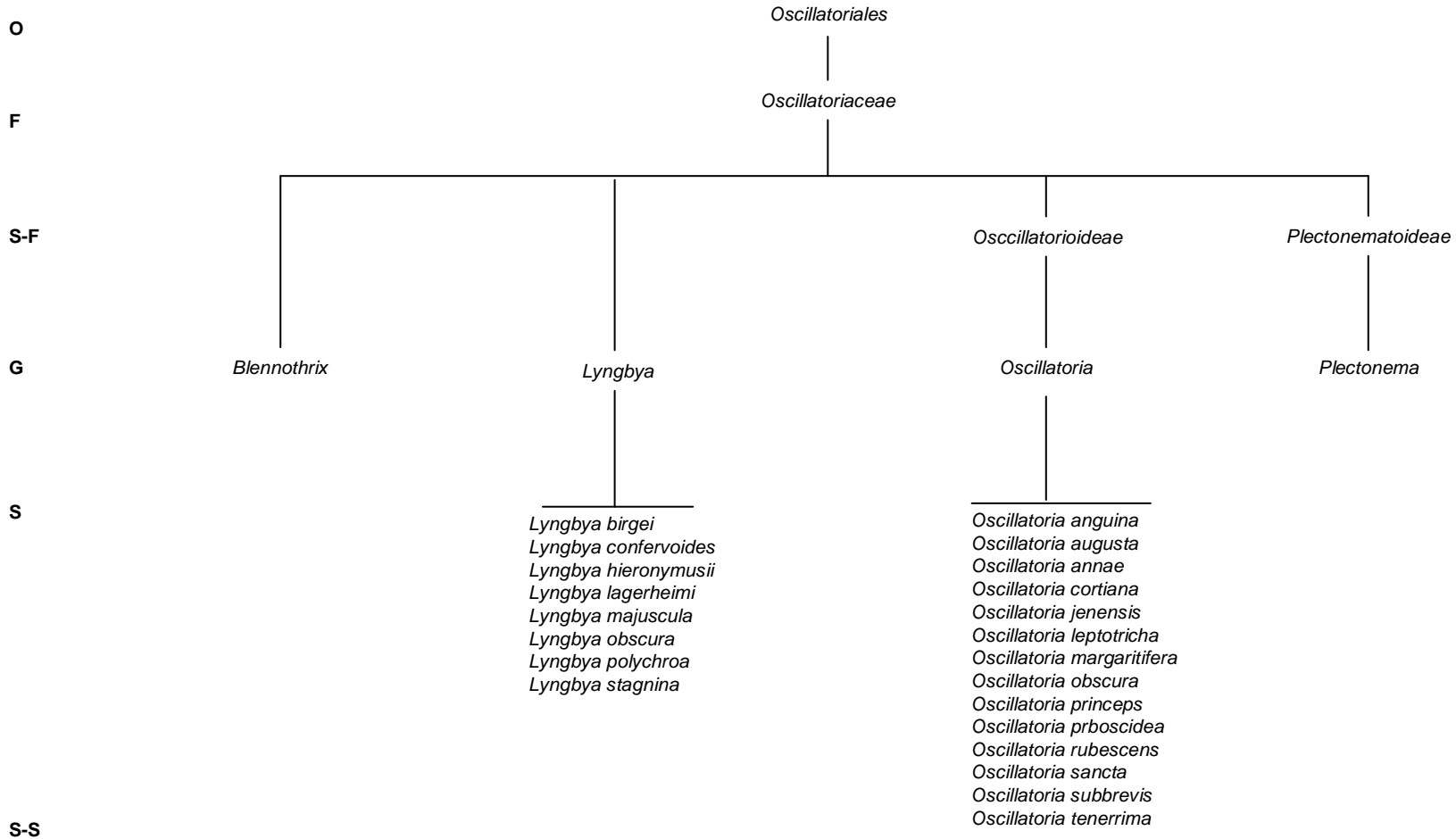
Katagnymene

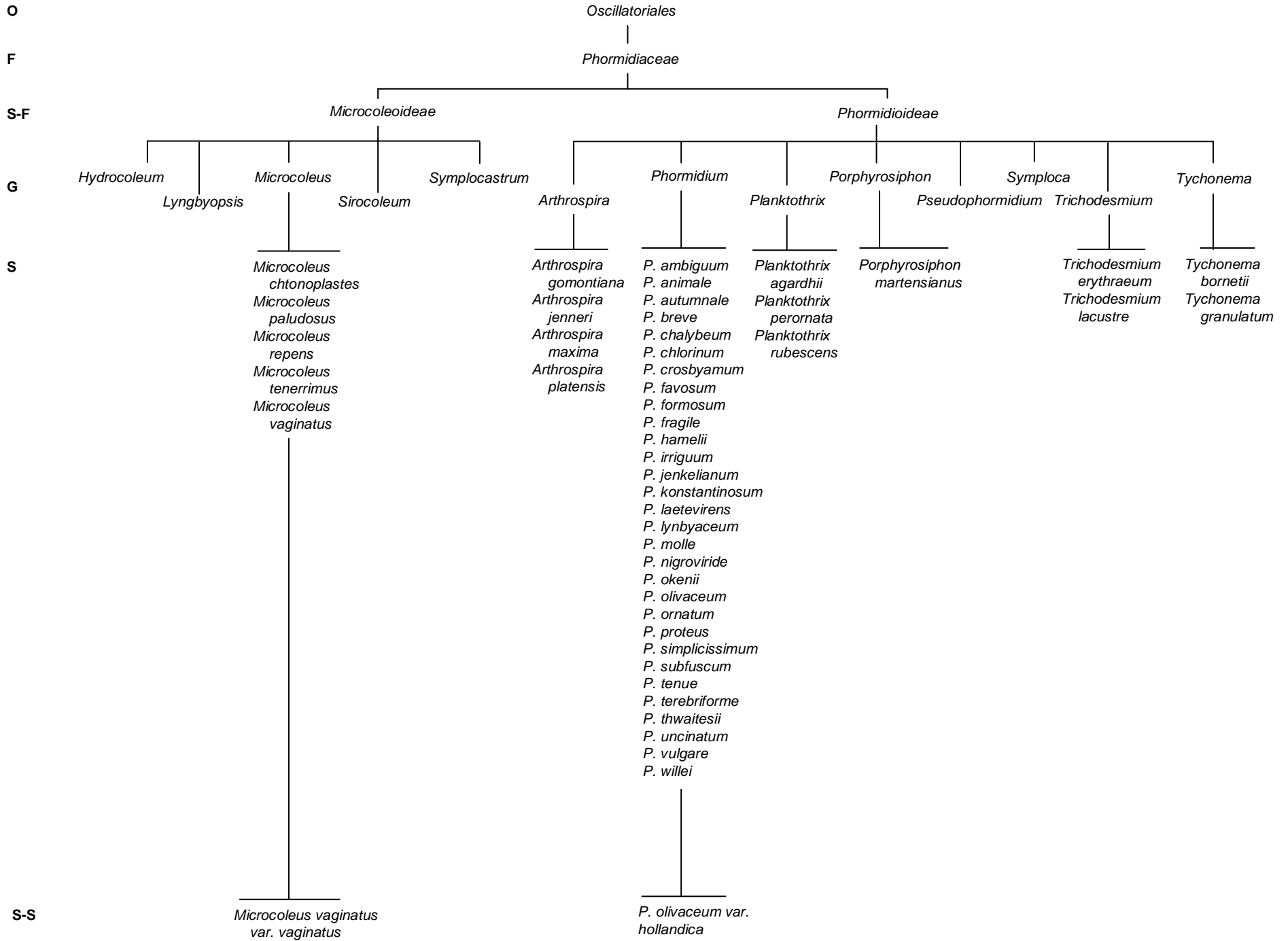
S

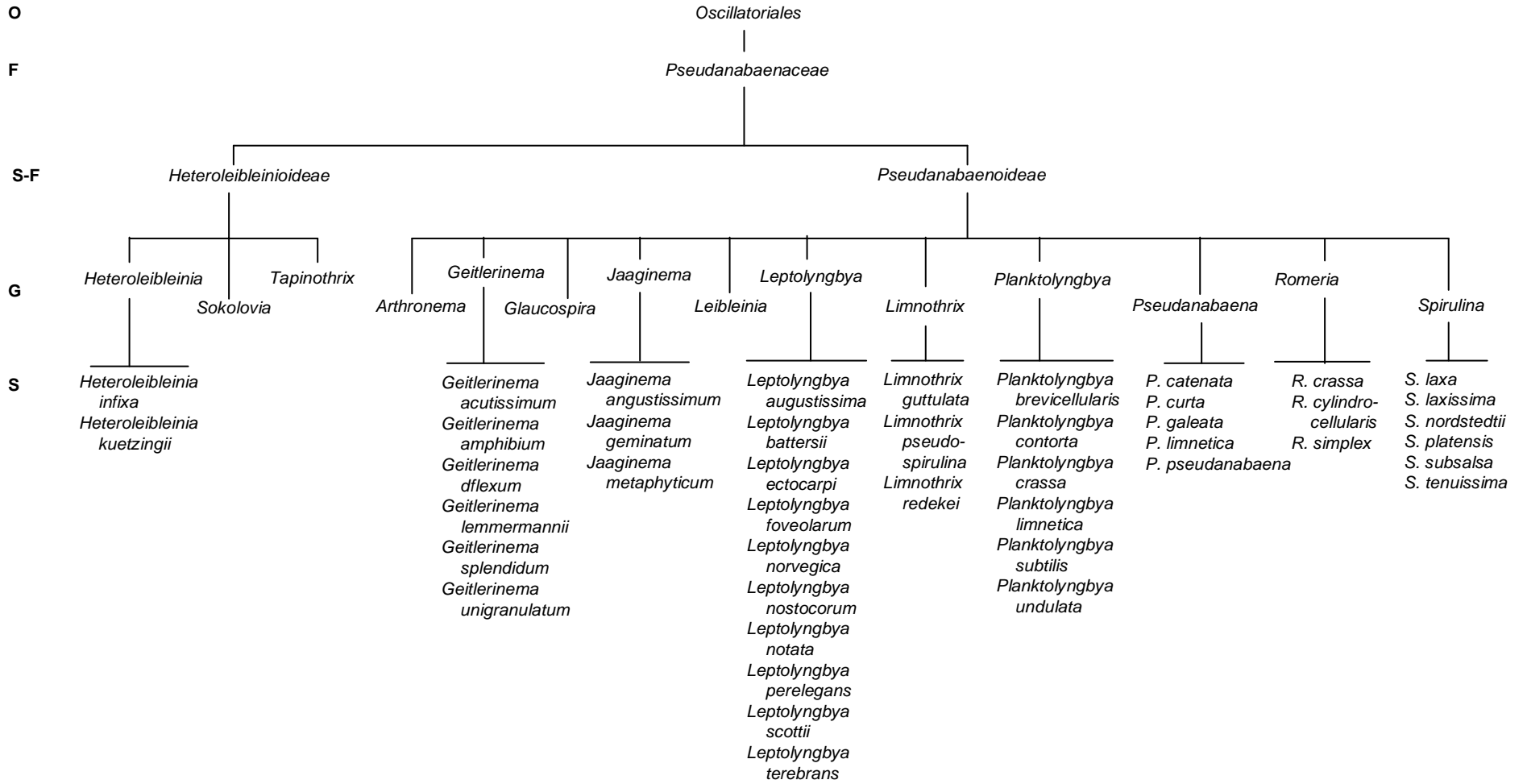
Crinalium epipsammum

Starria zimbabwensis

S-S







Oscillatoriales



Schizotrichaceae



Schizothrix



Schizothrix arenaria
Schizothrix coriacea
Schizothrix friesii
Schizothrix lardacea
Schizothrix penicillata

O

F

G

S

S-S

CLASS
Hormogonia

ORDER
Nostocales

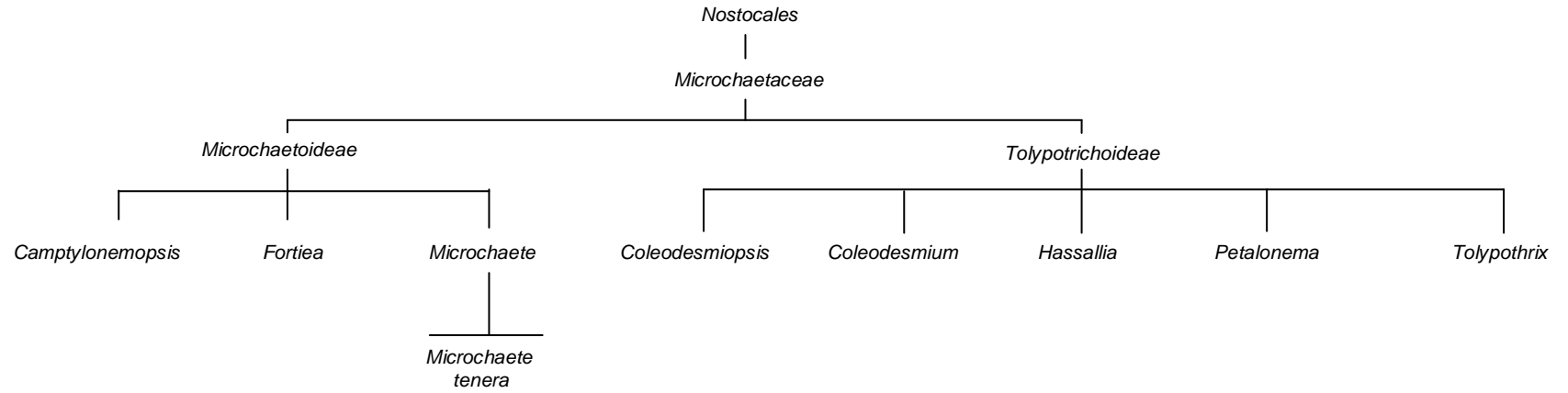
O

F

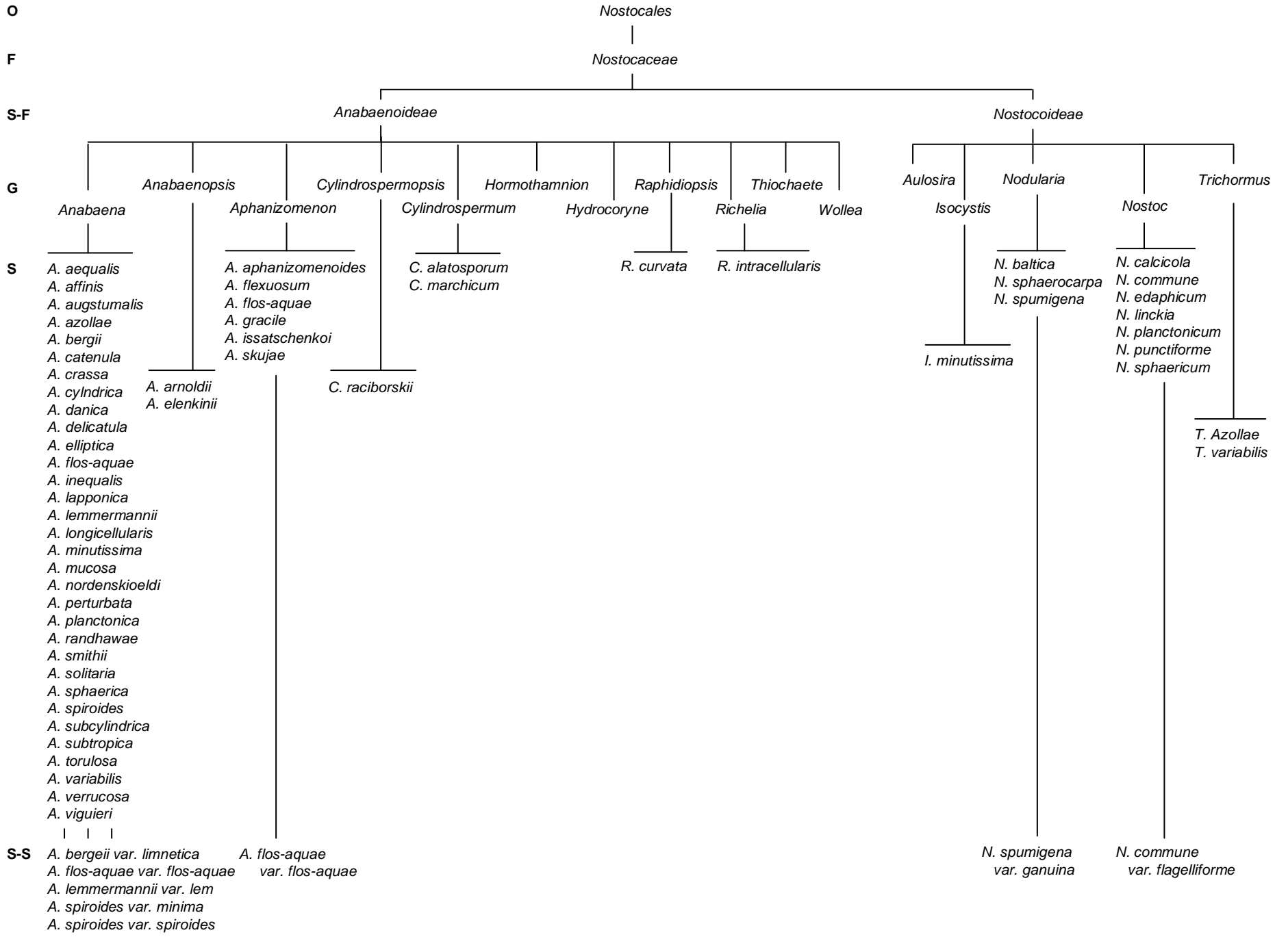
S-F

G

S



S-S



O

Nostocales

F

Rivulariaceae

G

Calothrix

Dichothrix

Gardnerula

Gloeotrichia

Isactis

Rivularia

Sacconema

S

Calothrix braunii
Calothrix brevissima
Calothrix confervicola
Calothrix consociata
Calothrix epiphytica
Calothrix fusca
Calothrix scopulorum
Calothrix viguieri

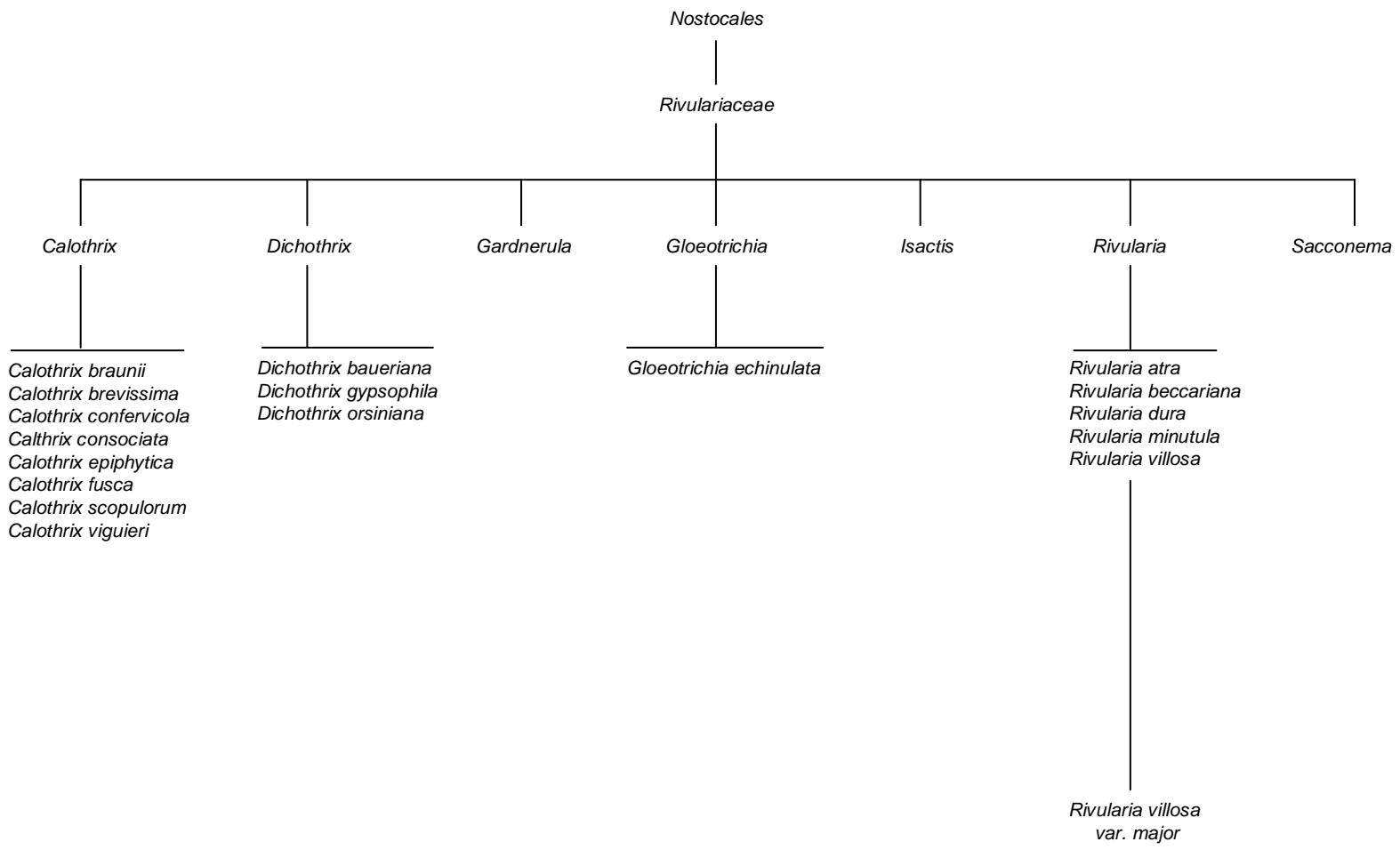
Dichothrix baueriana
Dichothrix gypsophila
Dichothrix orsiniana

Gloeotrichia echinulata

Rivularia atra
Rivularia beccariana
Rivularia dura
Rivularia minutula
Rivularia villosa

S-S

Rivularia villosa
 var. *major*



O

Nostocales

F

Scytonemataceae

G

Kyrtuthrix

Scytonema

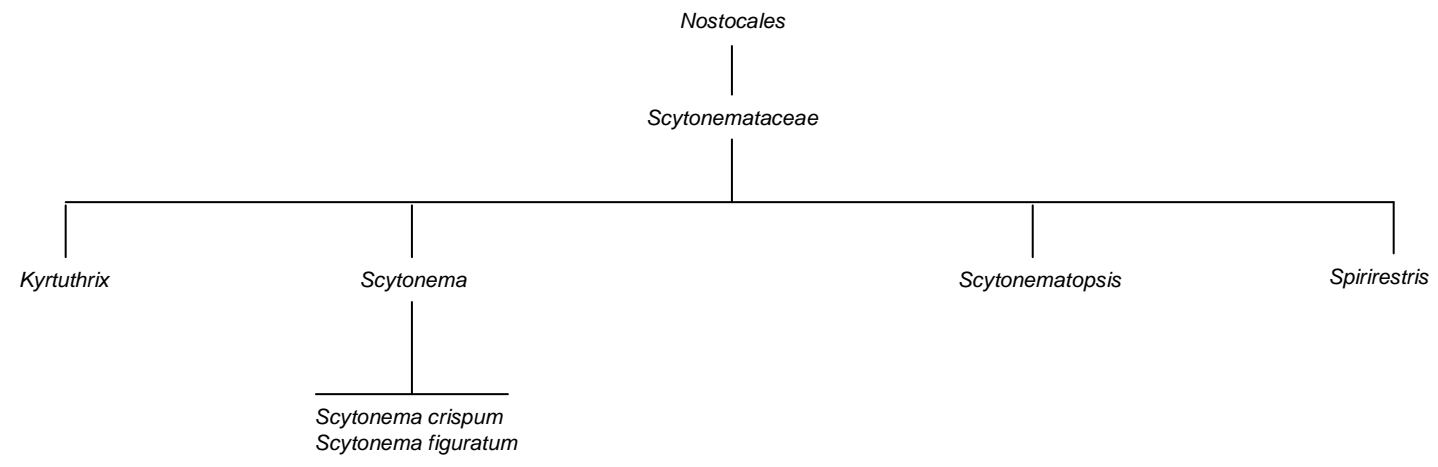
Scytonematopsis

Spirestris

S

Scytonema crispum
Scytonema figuratum

S-S



CLASS

Hormogonia

ORDER

Stigonematales

Stigonematales

Borzinemataceae

Borzinema

Handeliella

Schmidleinema

Seguenzaea

Spelaeopogon

O

F

G

S

S-S

O

Stigonematales

F

Capsosiraceae

G

Capsosira

Desmosiphon

Hyphomorpha

Letestuinema

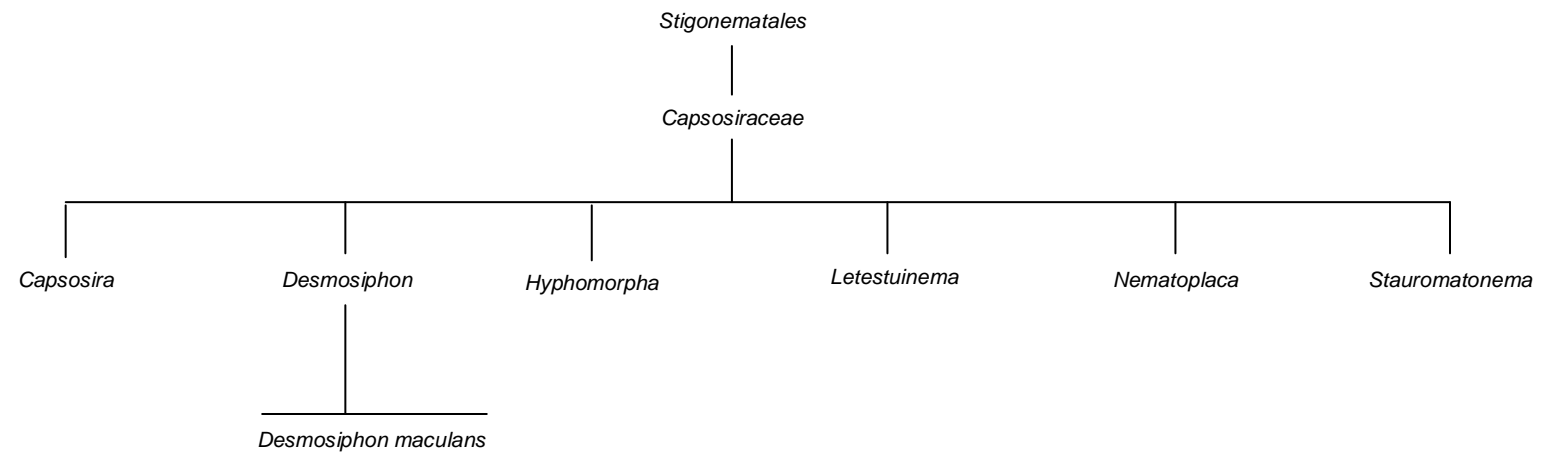
Nematoplaca

Stauromatonema

S

Desmosiphon maculans

S-S



Stigonematales

Chlorogloeopsaceae

Chlorogloeopsis

Heterocyanococcus

O

F

G

S

S-S

O

Stigonematales

F

Loriellaceae

G

Albrightia

Brachytrichiopsis

Colteronema

Geitleria

Loefgrenia

Loriella

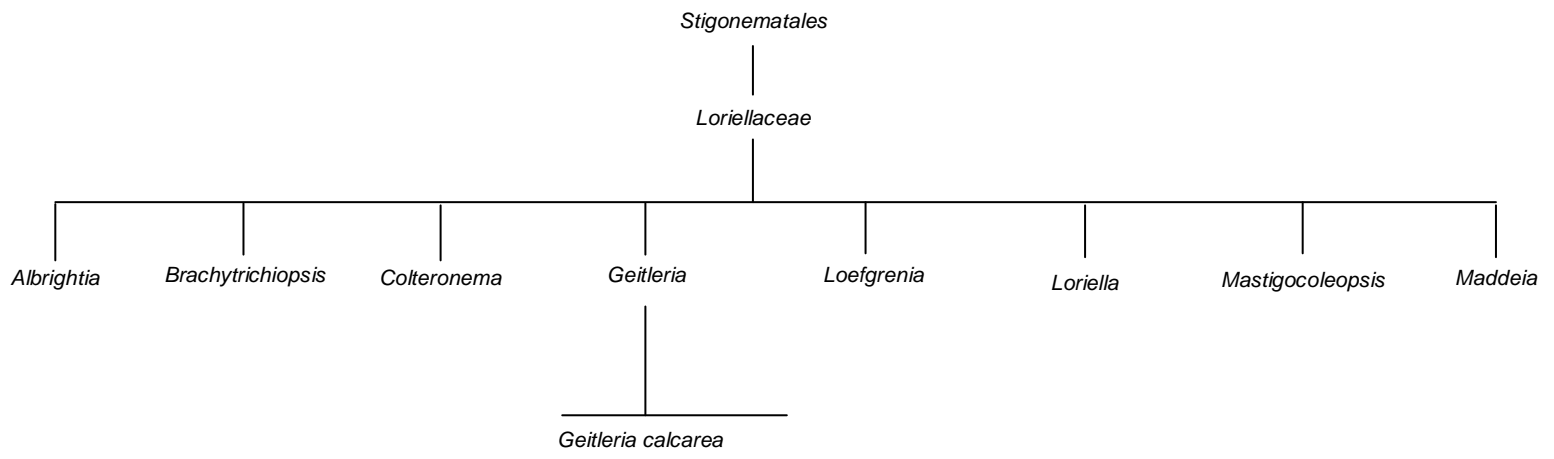
Mastigocoleopsis

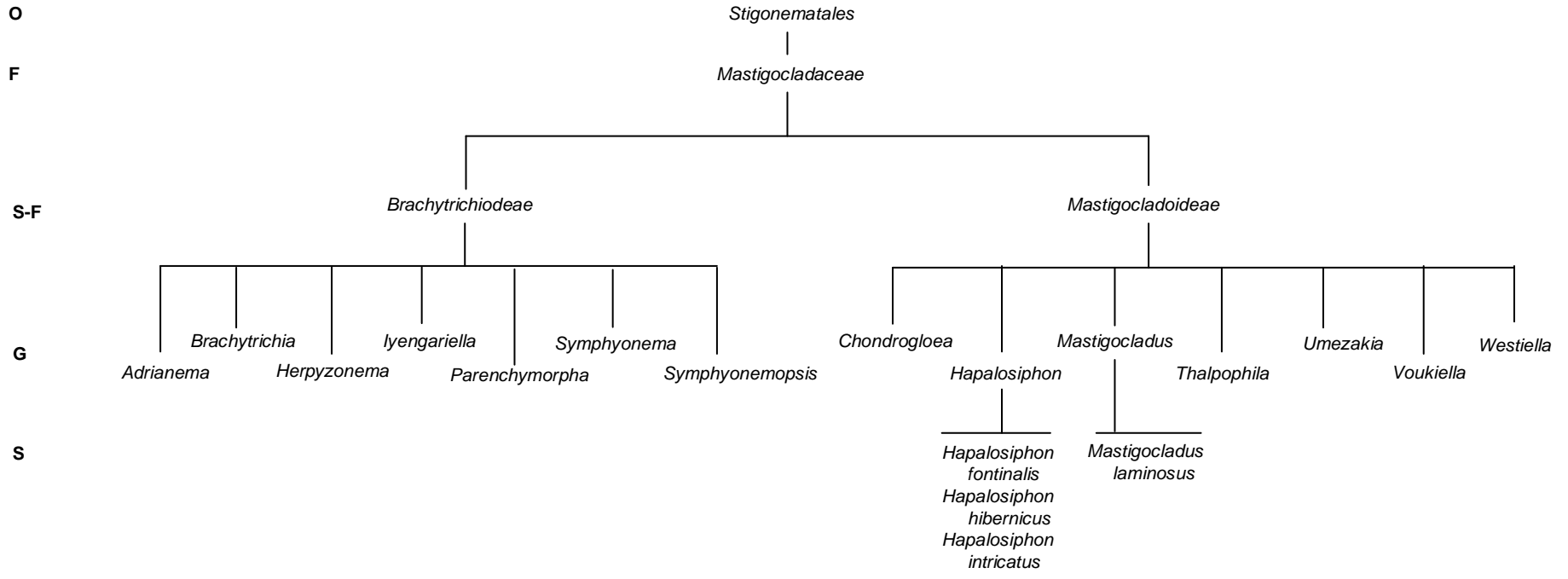
Maddeia

S

Geitleria calcarea

S-S





O

F

G

S

Stigonematales

Nostochopsaceae

Baradlaia

Mastigocladopsis

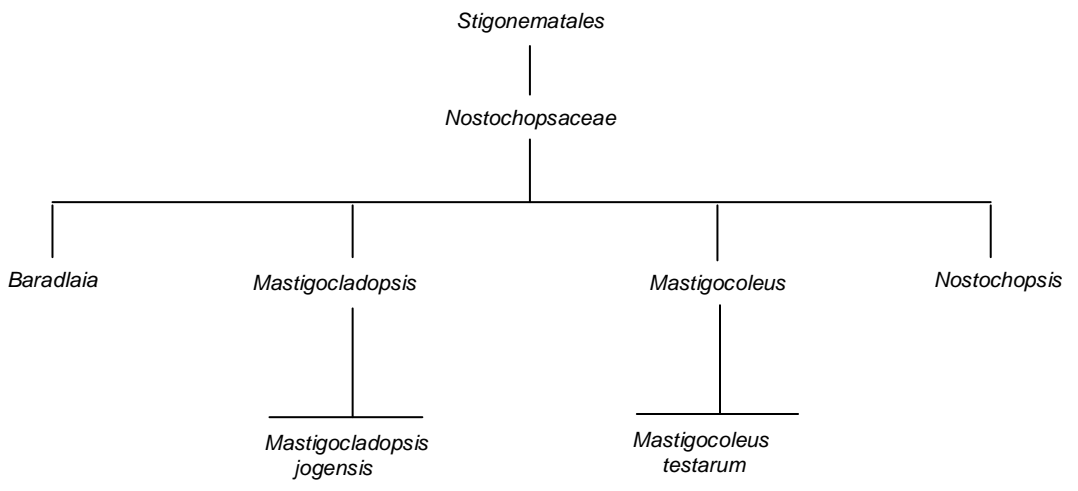
Mastigocoleus

Nostochoopsis

*Mastigocladopsis
jogensis*

*Mastigocoleus
testarum*

S-S



O

Stigonematales

F

Stigonemataceae

G

Cyanobotrys

Homeoptycha

Pulvinularia

Stigonema

S

Stigonema hormoides
Stigonema informe
Stigonema minutum
Stigonema panniforme

S-S

