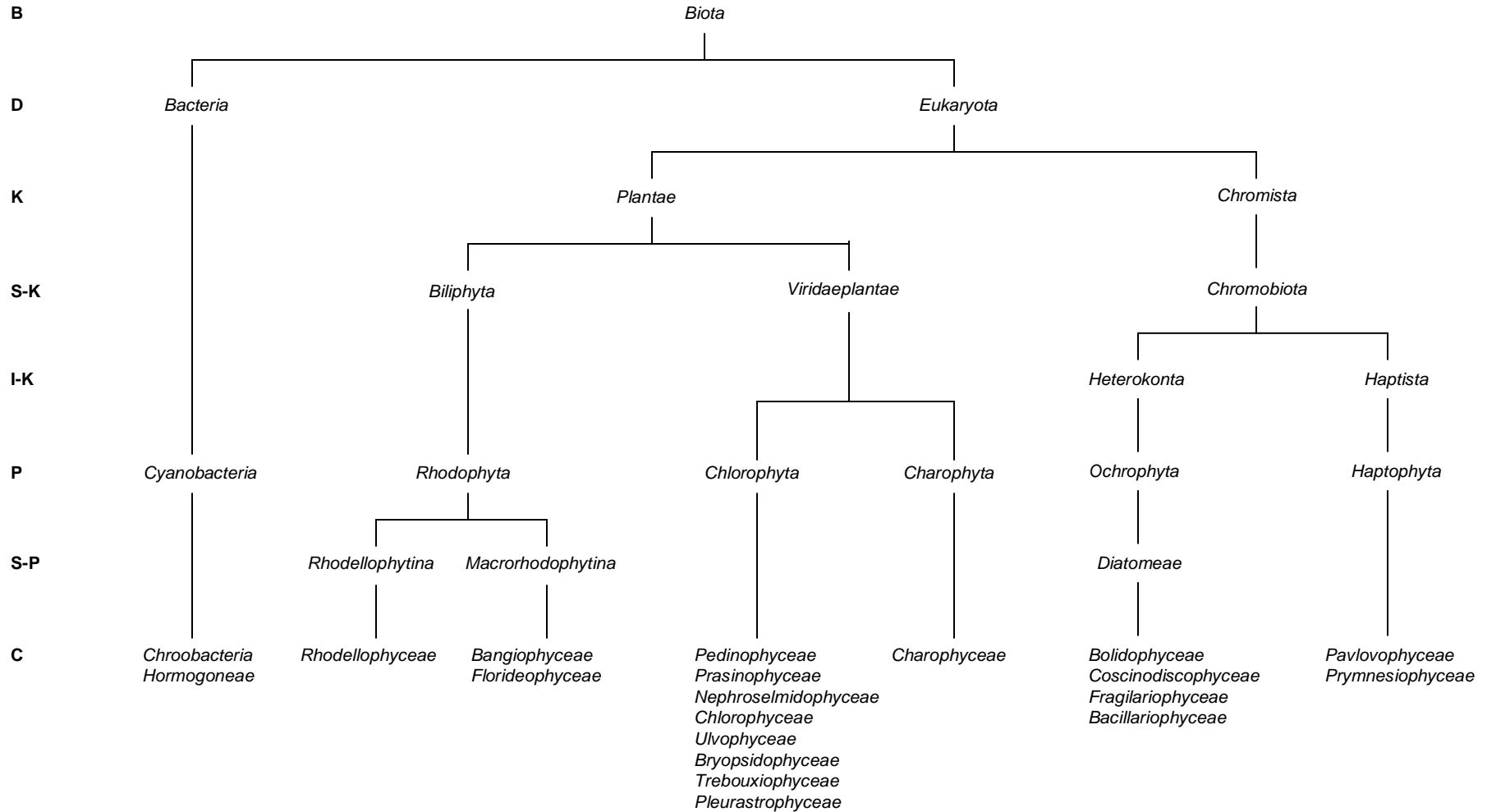


# CLASS LEVEL TAXONOMY OF AQUATIC PHYLA WITH COMMERCIAL USE



Key to Vertical Axis on All Charts  
 B=Biota; D=Domain; K=Kingdom; S-K=Sub-Kingdom; I-K=Infrakingdom; P=Phylum;  
 S-P=Sub-Phylum; C=Class; O=Order; F=Family; S-F=Sub-Family; G=Genus; S=Species; S-S=Sub-Species

The Sub-Kingdom *Biliphyta* and the Phyla *Chlorophyta* and *Charophyta* have breakout charts to the Genus level;  
 The Phylum *Cyanobacteria* has breakout charts to the Sub-Species level.