

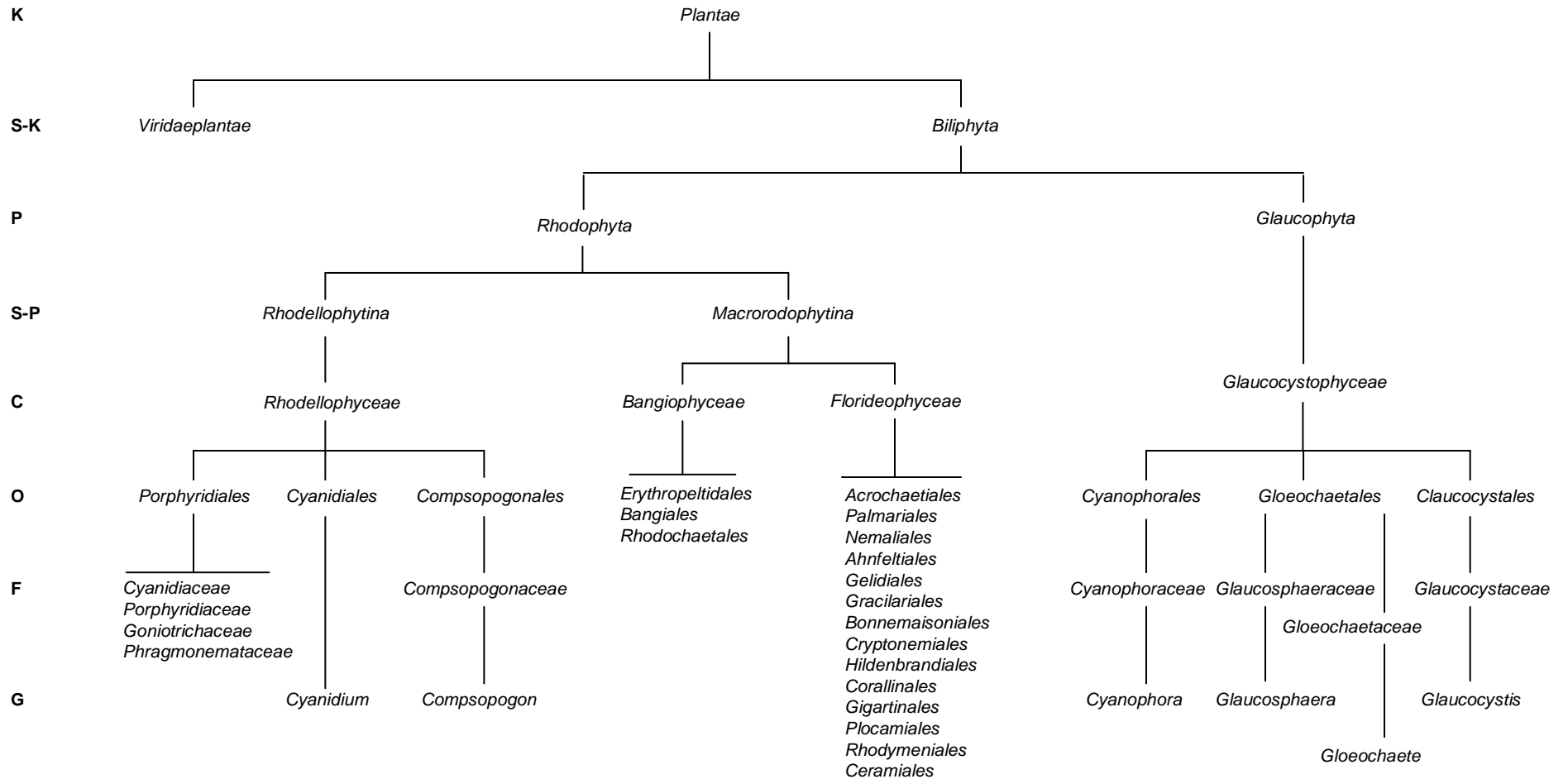
SUB-KINGDOM

Biliphyta

PHYLA

Glaucophyta and Rhodophyta

SUB-KINGDOM BILIPHYTA, PHyla RHODOPHYTA AND GLAUCOPHYTA



Note

The Order of *Porphyridiales* and the Classes of *Bangiophyceae* and *Florideophyceae* have breakout charts following

Key to Vertical Axis on All Charts
 B=Biota; D=Domain; K=Kingdom; S-K=Sub-Kingdom; I-K=Infrakingdom; P=Phylum;
 S-P=Sub-Phylum; C=Class; O=Order; F=Family; S-F=Sub-Family; G=Genus; S=Species; S-S=Sub-Species

Taxonomy is from The Taxonomicon using Systema Naturae 2000 at
<http://www.taxonomy.nl/Taxonomicon/TaxonTree.aspx?id=114296>

CLASS

Rhodellophyceae

ORDER

Porphyridiales

O

Porphyridiales

F

Cyanidiaceae

Porphyridiaceae

Goniotrichaceae

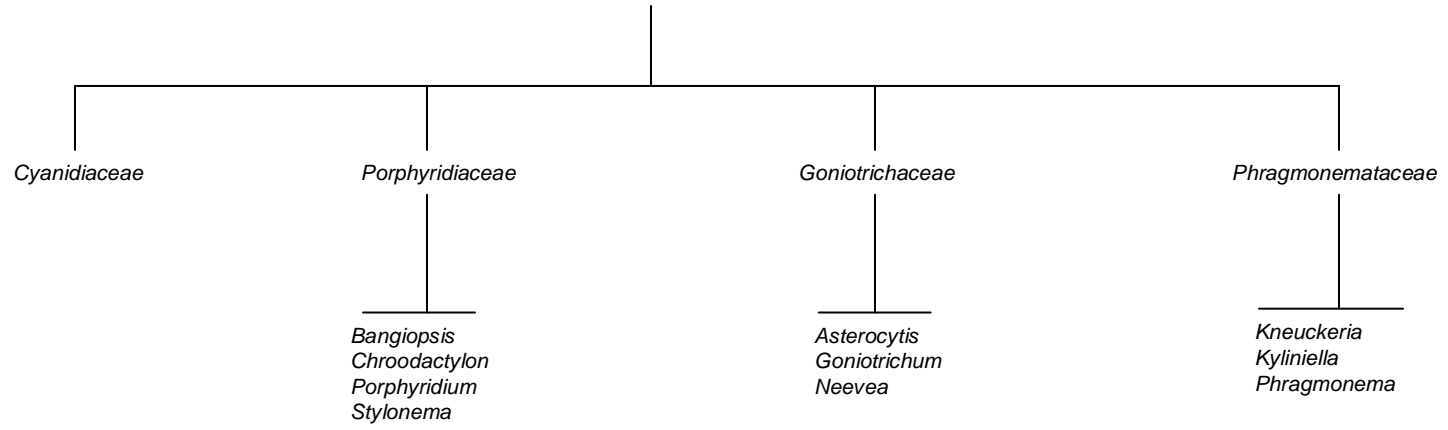
Phragmonemataceae

G

Bangiopsis
Chroodactylon
Porphyridium
Stylonema

Asterocytis
Goniotrichum
Neevea

Kneuckeria
Kyliniella
Phragmonema



SUB-PHYLUM
Macrorodophytina

CLASS
Bangiophyceae

C

Bangiophyceae

O

Erythropeltiales

Bangiales

Rhodochaetales

F

Erythropeltidaceae

Erythrotrichiaceae

Bangiaceae

Boldiaceae

Rhodochaetaceae

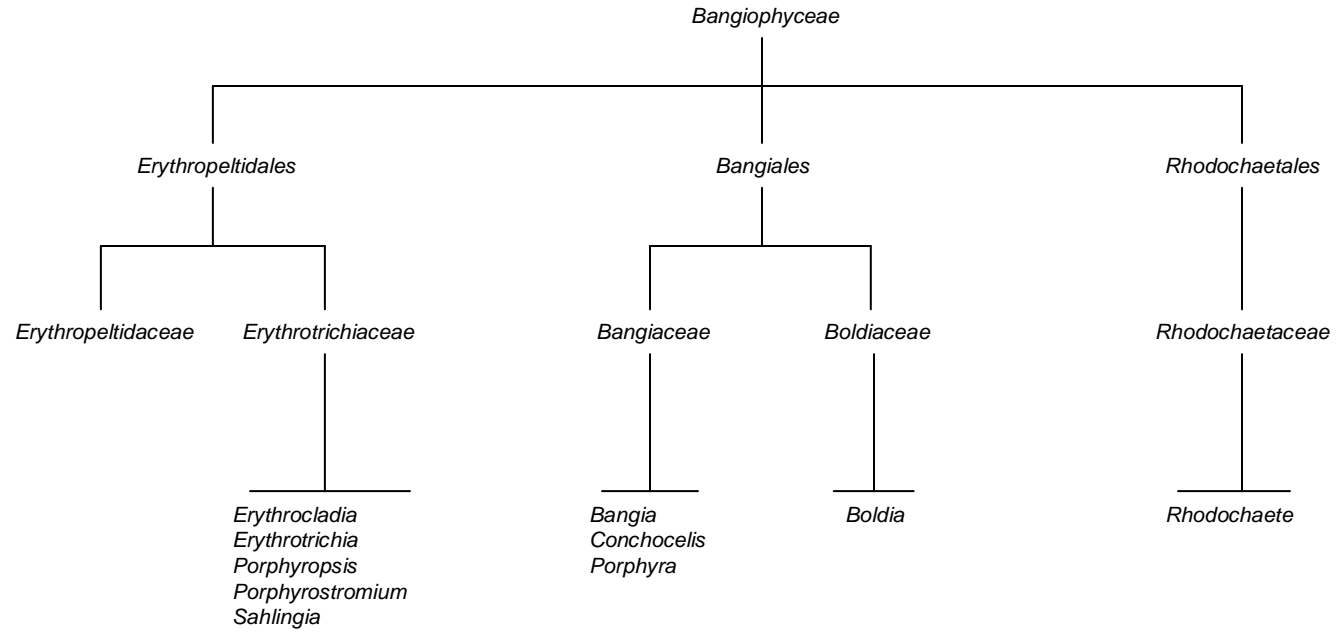
G

Erythrocladia
Erythrotrichia
Porphyropsis
Porphyrostromium
Sahlingia

Bangia
Conchocelis
Porphyra

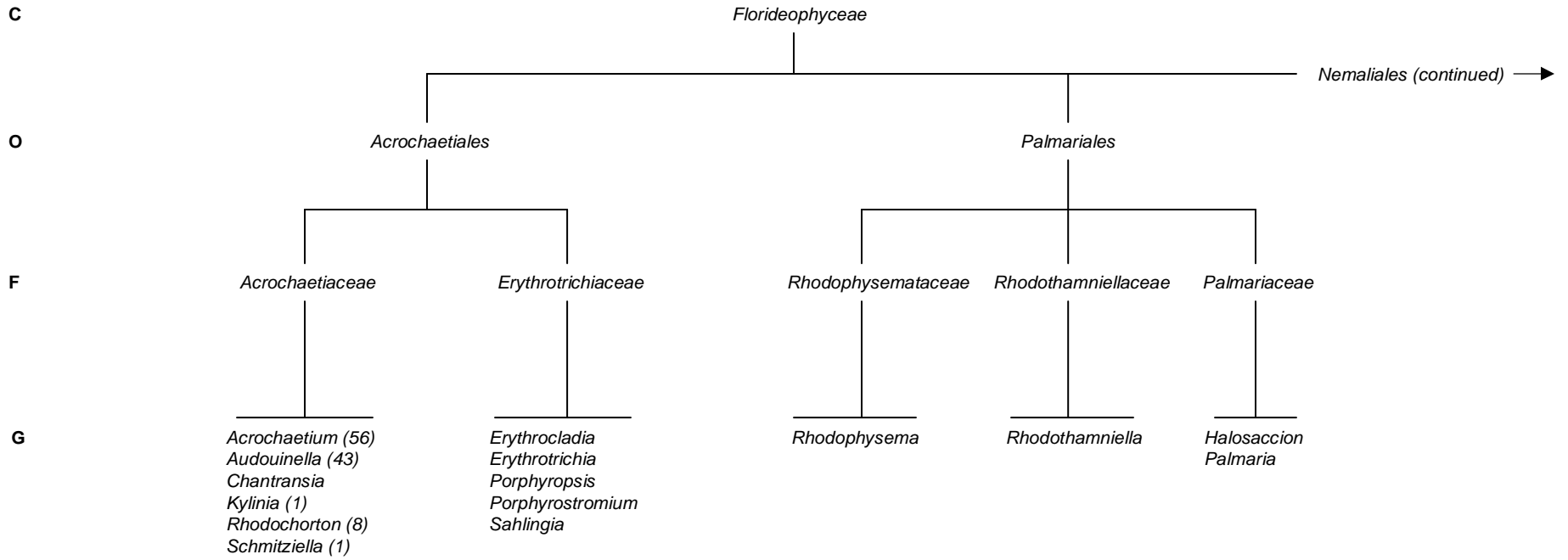
Boldia

Rhodochaete

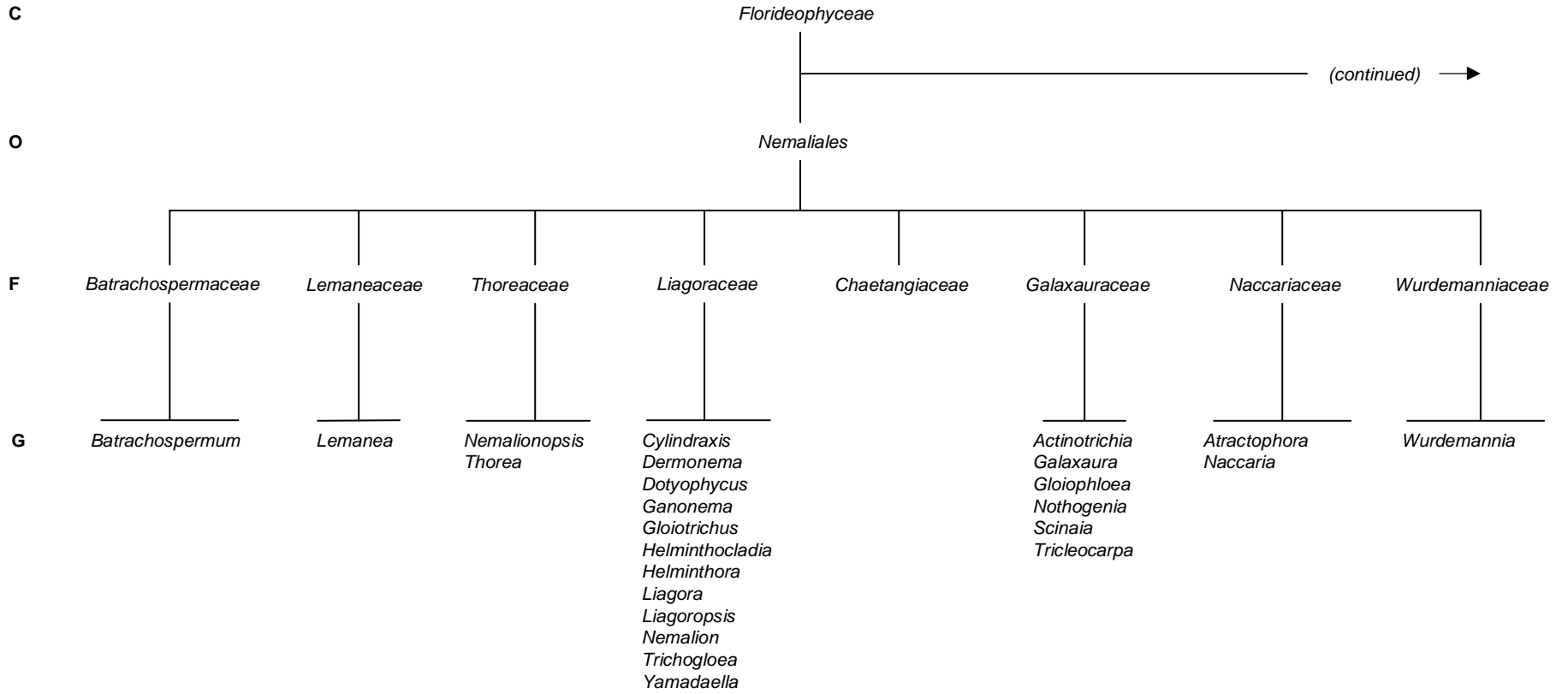


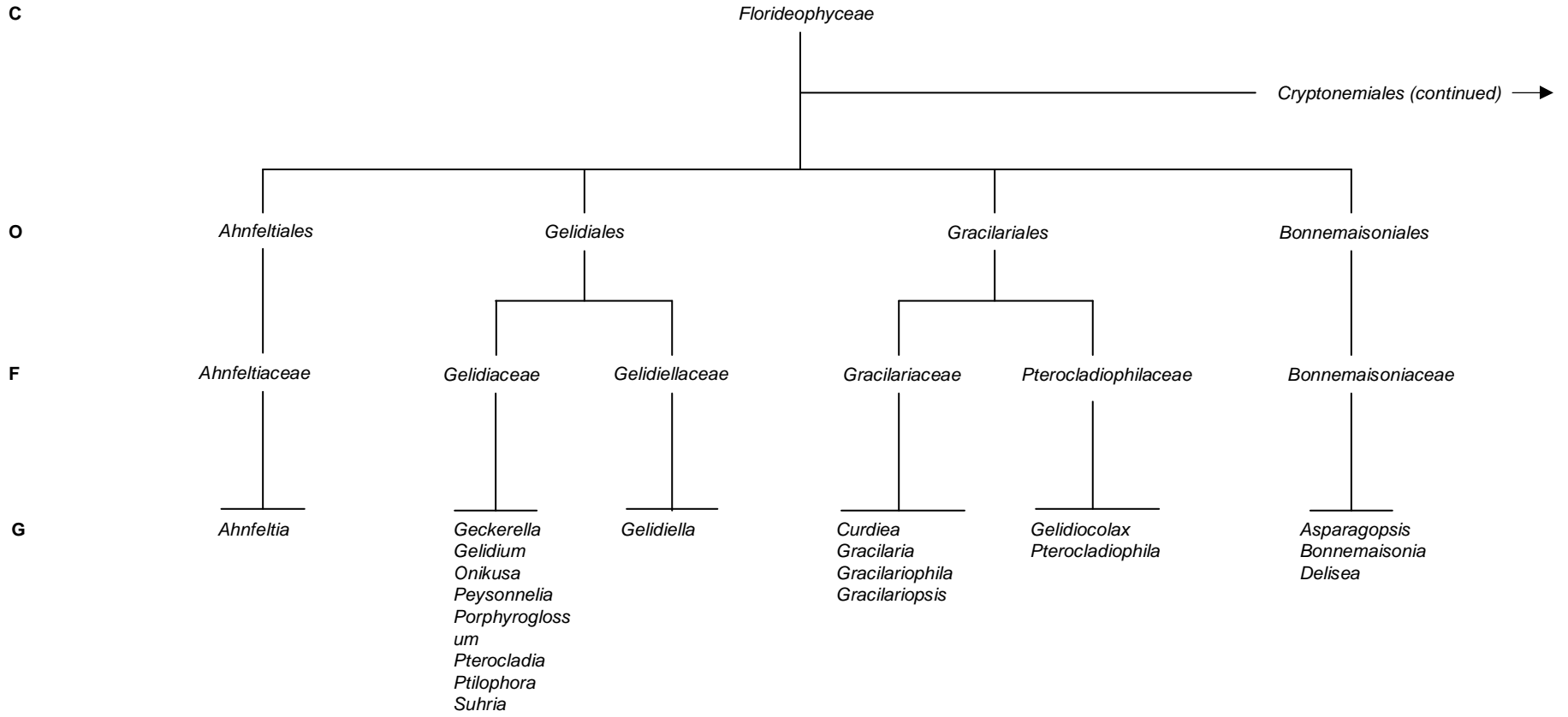
SUB-PHYLUM
Macrorodophytina

CLASS
Florideophyceae



Note: Numbers in parentheses after genera are species counts





C

Florideophyceae

(continued) →

O

Cryptonemiales

F

Acrosymphytaceae

Weeksiaceae

Choreocolacaceae

Corynomorphaceae

Kallymeniaceae

Crossocarpaceae

Tichocarpaceae

Rhizophyllidaceae

Dumontiaceae

Halymeniaceae

Pseudoanemoniaceae

Endocladaceae

Gloiosiphoniaceae

Peyssonneliaceae

Acrosymphyton

Constantinea
Leptochldia
Weeksia

Choreocolax
Harveyella

Corynomorpha

Endocladia
Gloiopeltis

Tichocarpus

G

Desmia
Ochtodes
Portieria
Rhizophyllis

Cryptosiphonia
Dasyphloea
Dilsea
Dudresnaya
Dumontia
Farlowia
Gibsmithia
Kraftia
Neodilsea
Pikea
Rhodopeltis

Aeodes
Carpopeltis
Codiophyllum
Cryptonemia
Epiphloea
Gelinaria
Grateloupia
Halymenia
Pachymenia
Polyopes
Prionitis
Thamnoclonium

Humbrella
Pseudoanemonia

Austrophyllis
Callocolax
Callophyllis
Cirrulicarpus
Kallymenia
Polycoelia
Pugetia
Thamnophyllis

Crossocarpus
Erythrophyllum
Kallymeniopsis

Gloiosiphonia
Schimmelmannia
Thuretella

Cruriella
Ethelia
Peyssonnelia
Polystrata

C

Florideophyceae

Ceramiales (continued) →

O

Hildenbrandiales

Plocamiales

Rhodymeniales

F

Hildenbrandiaceae

Plocamiaceae

Lomentariaceae

Rhodymeniaceae

Champiaceae

G

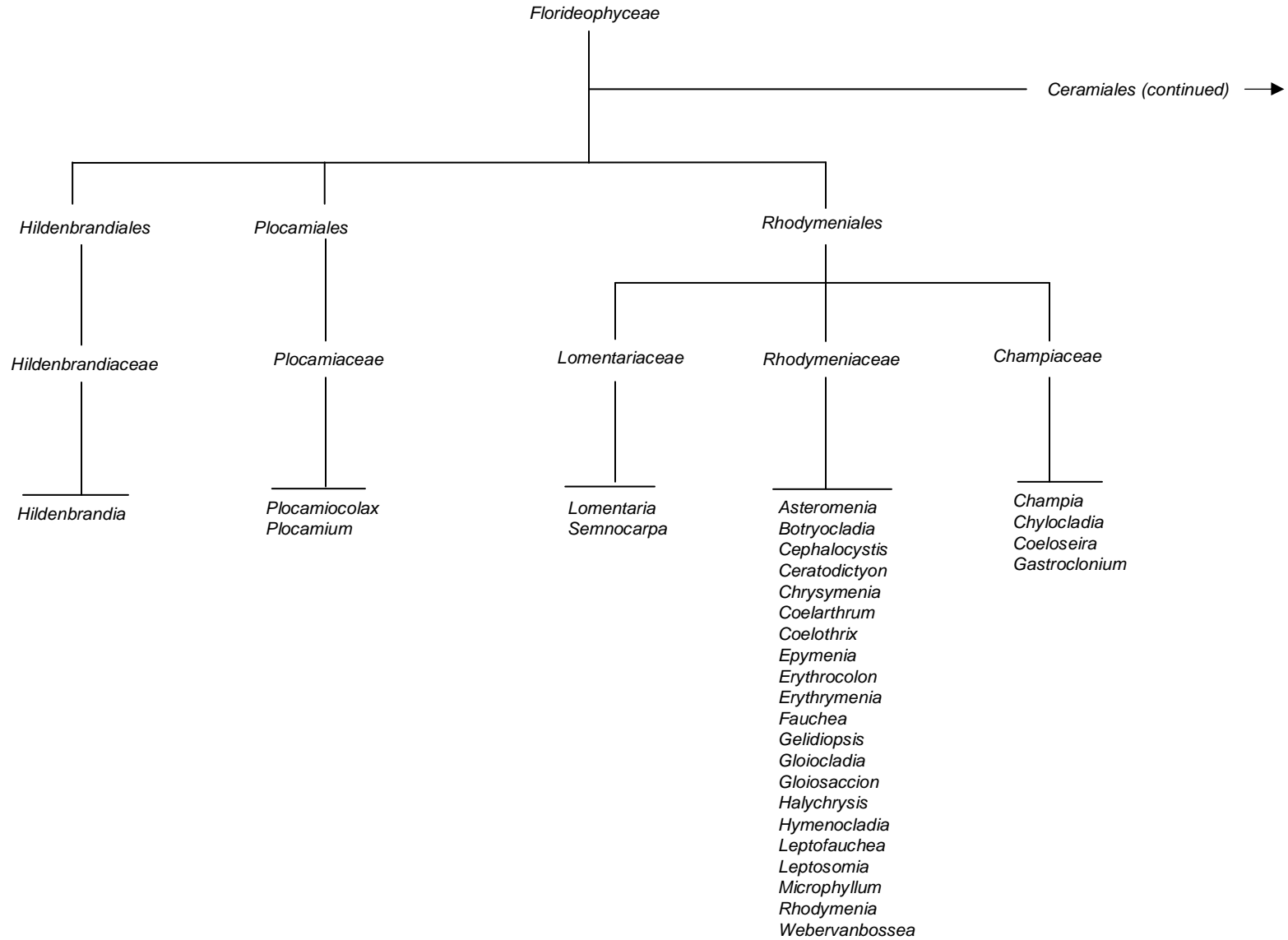
Hildenbrandia

Plocamocolax
Plocamium

Lomentaria
Semnocarpa

Asteromenia
Botryocladia
Cephalocystis
Ceratodictyon
Chrysmenia
Coelarthrum
Coelothrix
Epymenia
Erythrocolon
Erythrymenia
Fauchea
Gelidiopsis
Gloiocladia
Gloiosaccion
Halychrysis
Hymenocladia
Leptofauchea
Leptosomia
Microphyllum
Rhodymenia
Webervanbossea

Champia
Chylocladia
Coeloseira
Gastroclonium



C

Florideophyceae

Corallinales (continued) →

O

Ceramiales

F

Ceramiaceae

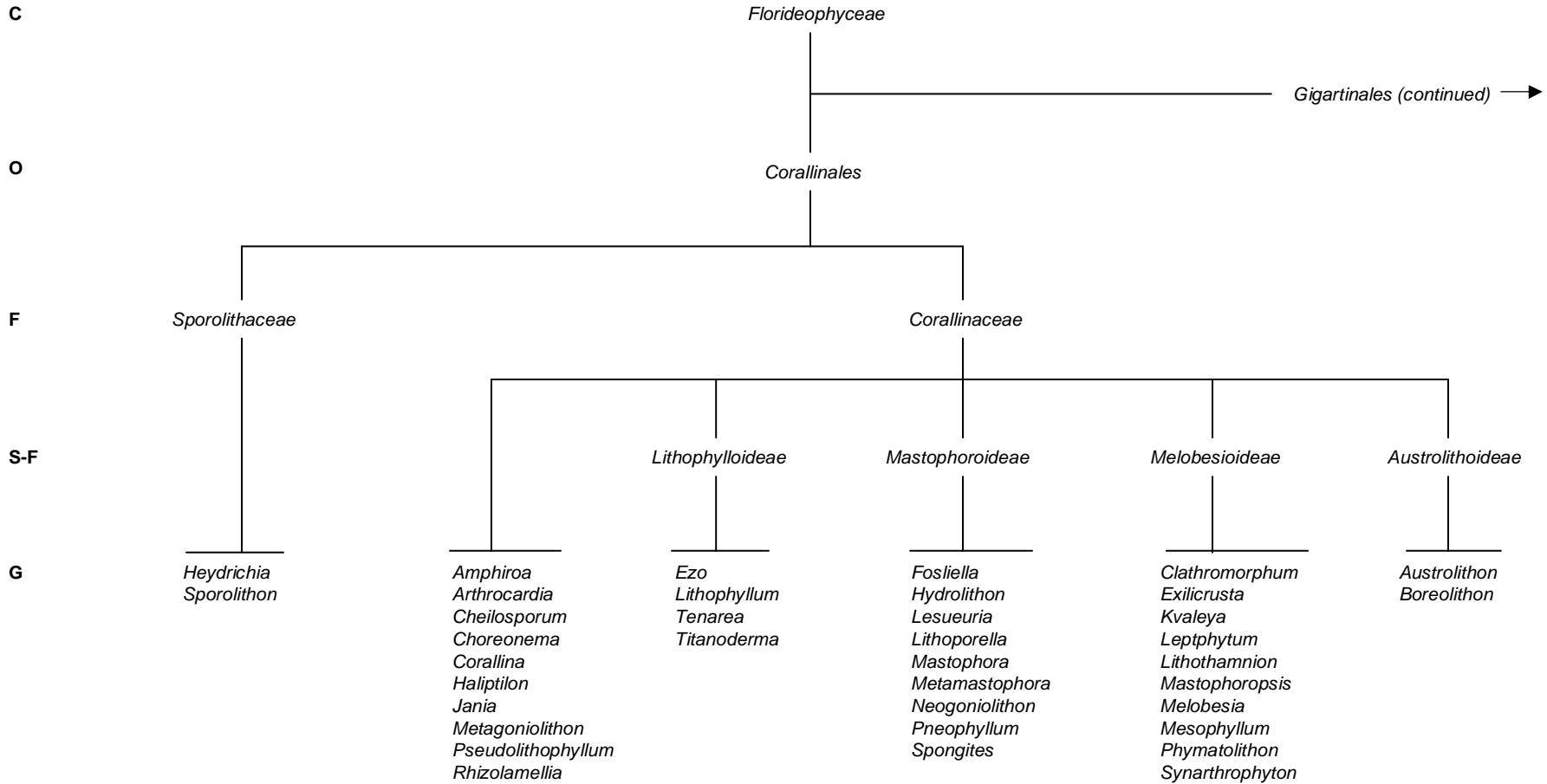
Delesseriaceae

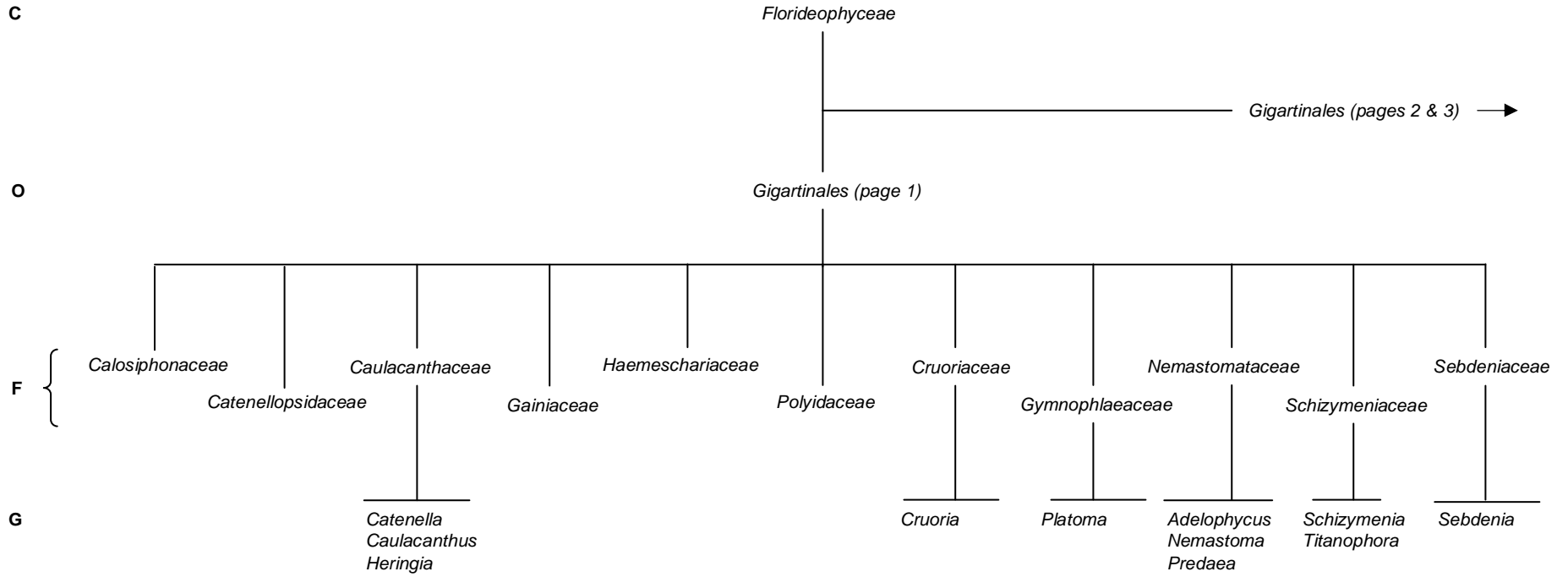
Dasyaceae

Rhodomelaceae

G

<i>Acrothamnion</i>	<i>Drewiana</i>	<i>Pseudospora</i>	<i>Acrosorium</i>	<i>Hymenena</i>	<i>Amphisbetema</i>	<i>Acanthophora</i>	<i>Enantiocladia</i>	<i>Oligocladella</i>
<i>Aglaothamnion</i>	<i>Episporium</i>	<i>Psilothallia</i>	<i>Apoglossum</i>	<i>Hypoglossum</i>	<i>Dasya</i>	<i>Acrocystis</i>	<i>Endosiphonia</i>	<i>Onychocolax</i>
<i>Amoenothamnion</i>	<i>Euptilocladia</i>	<i>Pterothamnion</i>	<i>Arachnophyllum</i>	<i>Martensia</i>	<i>Dictyurus</i>	<i>Aiolocolax</i>	<i>Exophyllum</i>	<i>Ophidocladus</i>
<i>Anisoschizus</i>	<i>Euptilota</i>	<i>Ptilocladia</i>	<i>Bartoniella</i>	<i>Membranoptera</i>	<i>Dipterocladia</i>	<i>Amansia</i>	<i>Gonatogenia</i>	<i>Osmundaria</i>
<i>Anotrichium</i>	<i>Gattya</i>	<i>Ptilothamnion</i>	<i>Botryoglossum</i>	<i>Myriogramme</i>	<i>Eupogodon</i>	<i>Bostrychia</i>	<i>Halopithys</i>	<i>Pachychaeta</i>
<i>Antithamnion</i>	<i>Gongroceras</i>	<i>Reinboldiella</i>	<i>Branchioglossum</i>	<i>Neoholmesia</i>	<i>Haplodasya</i>	<i>Brongniartella</i>	<i>Halydictyon</i>	<i>Periphykon</i>
<i>Antithamnionella</i>	<i>Gordoniella</i>	<i>Seirospora</i>	<i>Caloglossa</i>	<i>Neuroglossum</i>	<i>Heterosiphonia</i>	<i>Bryocladia</i>	<i>Herposiphonia</i>	<i>Picconiella</i>
<i>Aristochamnion</i>	<i>Griffithsia</i>	<i>Shepleya</i>	<i>Chauviniella</i>	<i>Nienburgia</i>	<i>Rhodoptilum</i>	<i>Bryothamnion</i>	<i>Heterocladia</i>	<i>Placophora</i>
<i>Ballia</i>	<i>Guiryella</i>	<i>Spencerella</i>	<i>Claudea</i>	<i>Nitophyllum</i>	<i>Tapeinodasya</i>	<i>Carradoriella</i>	<i>Heterostroma</i>	<i>Polysiphonia</i>
<i>Balliella</i>	<i>Gymnothamnion</i>	<i>Spermothamnion</i>	<i>Cottoniella</i>	<i>Phitycolax</i>	<i>Thuretia</i>	<i>Chamaethamnion</i>	<i>Holotrichia</i>	<i>Polyzonia</i>
<i>Bornetia</i>	<i>Haloplegma</i>	<i>Spongoclonium</i>	<i>Crassilingua</i>	<i>Phitymophora</i>		<i>Chiracanthia</i>	<i>Husseyia</i>	<i>Protokuetzingia</i>
<i>Boryna</i>	<i>Herpochondria</i>	<i>Spyridia</i>	<i>Delesseria</i>	<i>Phycodrys</i>		<i>Chondria</i>	<i>Janczewskia</i>	<i>Pterosiphonia</i>
<i>Callithamniella</i>	<i>Involucrana</i>	<i>Syringocolax</i>	<i>Dicroglossum</i>	<i>Platysiphonia</i>		<i>Cladhymenia</i>	<i>Jeannerettia</i>	<i>Rhodolachne</i>
<i>Callithamnion</i>	<i>Lasiothalia</i>	<i>Tanakaella</i>	<i>Duckerella</i>	<i>Pollexenia</i>		<i>Cladurus</i>	<i>Kuetzingia</i>	<i>Rhodomela</i>
<i>Carpoblepharis</i>	<i>Laurenciophila</i>	<i>Tiffaniella</i>	<i>Gonimophyllum</i>	<i>Sarcomenia</i>		<i>Cliftonaea</i>	<i>Laurencia</i>	<i>Rhodomelopsis</i>
<i>Carpothamnion</i>	<i>Lejolisia</i>	<i>Trithamnion</i>	<i>Grinnellia</i>	<i>Sarcotrichia</i>		<i>Coeloclonium</i>	<i>Lenormandia</i>	<i>Rodriguezella</i>
<i>Centroceras</i>	<i>Liagorothamnieae</i>	<i>Wollastoniella</i>	<i>Halicnide</i>	<i>Schizoseris</i>		<i>Colacopsis</i>	<i>Lenormandiopsis</i>	<i>Rhytiphlaea</i>
<i>Ceramium</i>	<i>Lomathamnion</i>	<i>Wrangelia</i>	<i>Hemineura</i>	<i>Taenioma</i>		<i>Dasyclonium</i>	<i>Leveillea</i>	<i>Spriocladia</i>
<i>Compsothamnionella</i>	<i>Macrothamnion</i>		<i>Heterodoxia</i>	<i>Vanvoorstia</i>		<i>Dictyomenia</i>	<i>Lophocladia</i>	<i>Stictosiphonia</i>
	<i>Mazoyerella</i>		<i>Holmesia</i>	<i>Zellera</i>		<i>Digenea</i>	<i>Lophosiphonia</i>	<i>Streblocladia</i>
<i>Corallophila</i>	<i>Medeiothamnion</i>					<i>Digeneopsis</i>	<i>Malaconema</i>	<i>Symphyclocladia</i>
<i>Crouania</i>	<i>Microcladia</i>					<i>Dipterosiphonia</i>	<i>Melanamansia</i>	<i>Tayloriella</i>
<i>Dasyphila</i>	<i>Monosporus</i>					<i>Ditria</i>	<i>Melanothamnus</i>	<i>Tolypiocladia</i>
<i>Desikacharyella</i>	<i>Perishelia</i>					<i>Dolichoscelis</i>	<i>Microcolax</i>	<i>Trichidium</i>
<i>Diplothamnion</i>	<i>Phlebothamnion</i>					<i>Doxodasya</i>	<i>Micropeuce</i>	<i>Trigenea</i>
<i>Dohrnilleae</i>	<i>Pleonosporium</i>					<i>Echinosporangium</i>	<i>Murrayella</i>	<i>Veleroa</i>
						<i>Echinothamnion</i>	<i>Neurymenia</i>	<i>Womersleyella</i>





C

Florideophyceae

Gigartinales (page 3) →

O

Gigartinales (page 2)

F

Calosiphoniaceae

Petrocelidaceae

Phylloporaceae

Gigartinaceae

Chondriellaceae

Polideaceae

Nizymeniaceae

Acrotlyaceae

Sphaerococcaceae

Phacelocarpaceae

Sarcodiaceae

G

Bertholdia
Calosiphonia

Ahnfeltiopsis
Gymnogongrus
Phyllophora
Porphyrodiscus
Schottera

Chondracanthus
Chondrus
Gigartina
Iridaea
Mazzaella
Rhodoglossum
Sarcothalia

Chondriella

Polyides

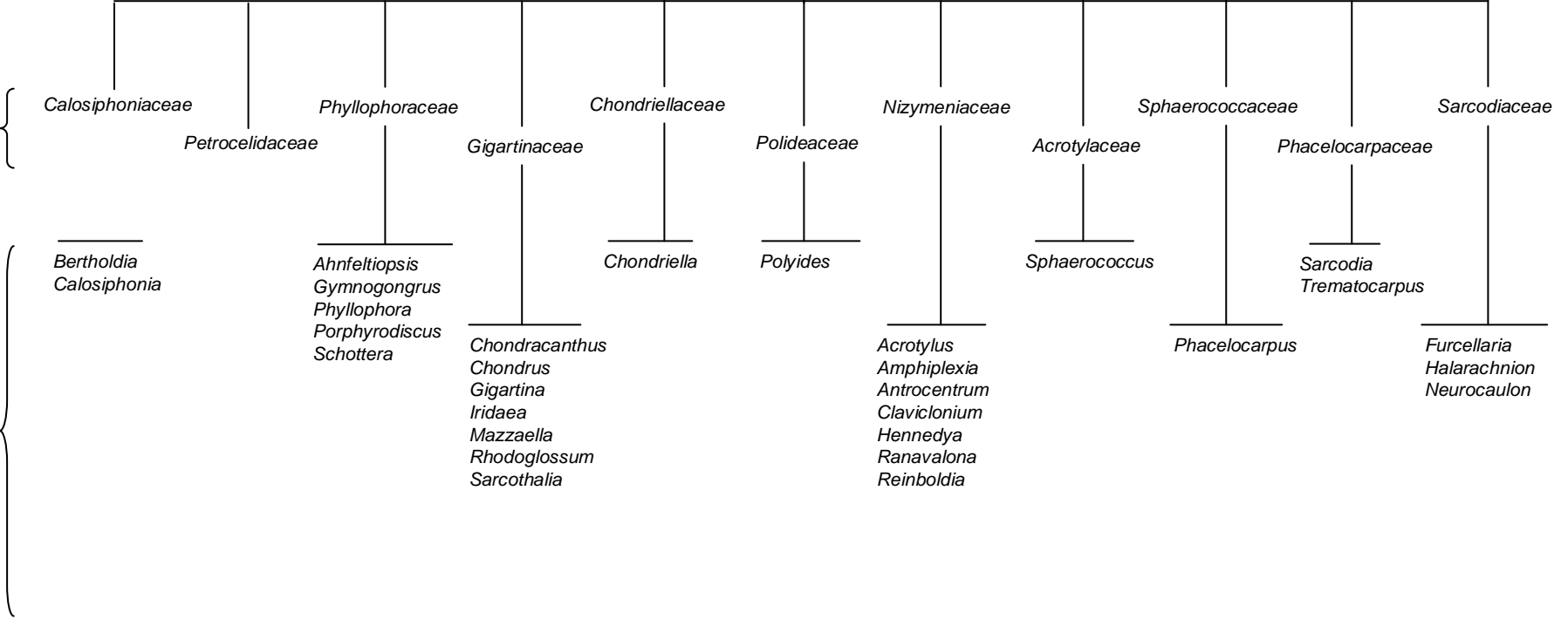
Acrotylus
Amphiplexia
Antrocentrum
Clavicionium
Hennedya
Ranavalona
Reinboldia

Sphaerococcus

Phacelocarpus

Sarcodia
Trematocarpus

Furcellaria
Halarachnion
Neurocaulon



C

Florideophyceae

O

Gigartinales (page 3)

F

Furcellariaceae

Solieriaceae

Hypneaceae

Rissoellaceae

Rhabdoniaceae

Cubiculosporaceae

Cystocloniaceae

Mychodeaceae

Mychodeophyllaceae

Dicranemataceae

Blinksiaceae

Furcellaria
Halarachnion
Neurocaulon

Hypnea
Hypneocolax
Rhododactylis

Rissoella

Catenellocolax

Cubiculosporum

Austroclonium
Calliblepharis
Craspedocarpus
Cystoclonium
Rhodophyllis
Stictosporum

Mychodea

Mychodeophyllum

Dicranema
Tenaciphyllum
Tylotus

Blinksia

G

Agardhiella
Areschougia
Betaphycus
Callophycus
Erythroclonium
Eucheuma
Euryomma
Gardneriella
Kappaphycus
Meristotheca
Meogardhiella
Rhabdonia
Sarconema
Solieria
Turnerella